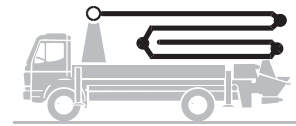


Truck-mounted concrete pump

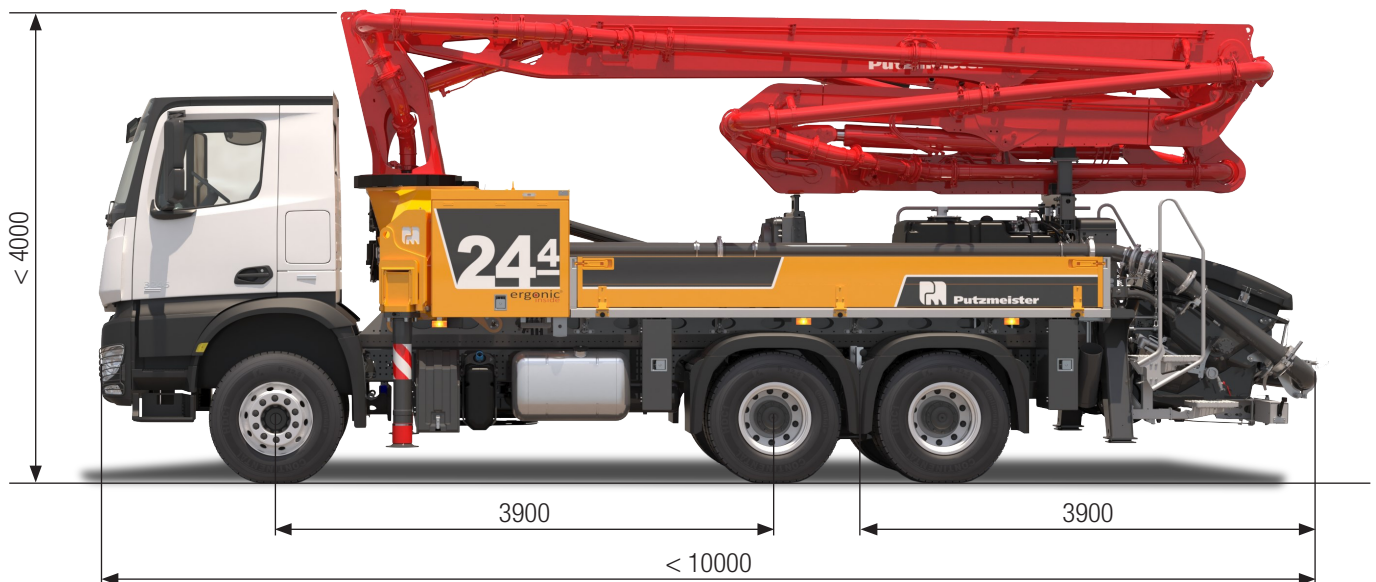
BSF 24-4.11 H

Output up to 160 m³/h
Delivery pressure up to 130 bar



.16 H
.15 i LS

ergonic[®]
inside **3**



Note: Standard version. Dimensions and weights depend on truck, pump model and equipment.
Dimensions in mm. Example based on Mercedes Benz Arocs 2636 with a 15 i LS core pump.
For illustration only.

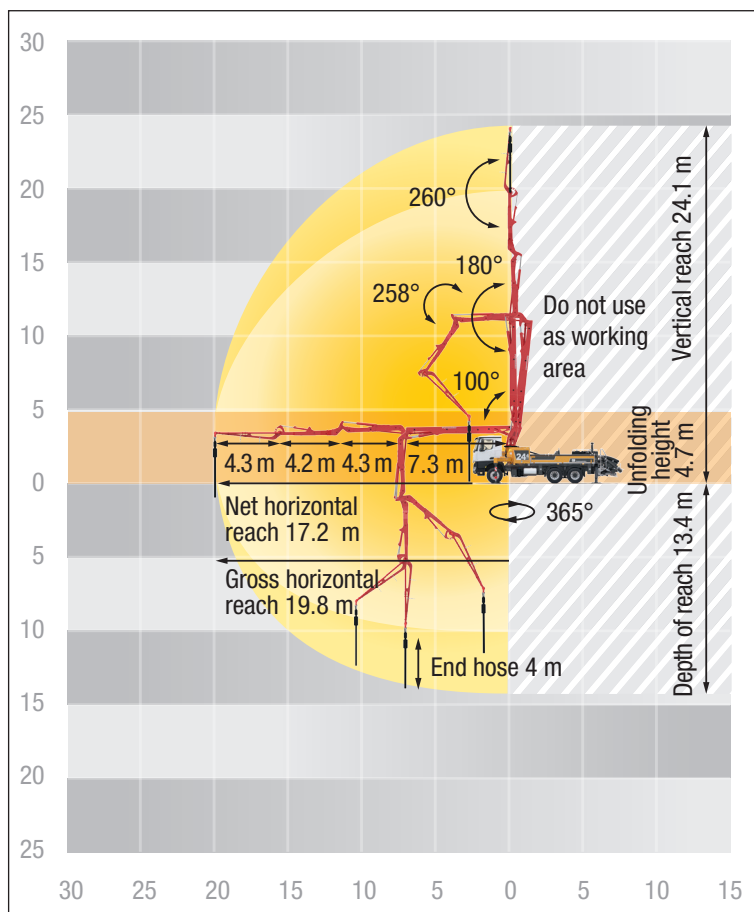
Technical data

Boom M 24-4		
Sections		4
Reach height	m	24.1
Horizontal reach	gross	m 19.7
	net	m 17.2
Reach depth max.	m	13.4
Unfolding height	m	4.7**
End hose length	m	4
Folding system		ZR
Delivery line		DN 125

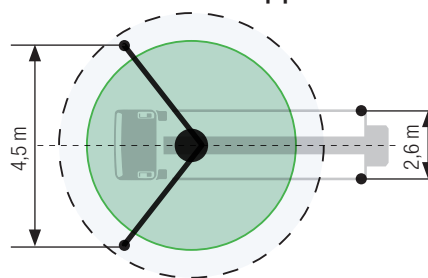
Pump		BSF	.11 H	.16 H	.15 i LS
Rod side	Output	m ³ /h	-	160	-
	Delivery pressure	bar	-	85	-
	Strokes	1/min.	-	31	-
Piston side	Output	m ³ /h	110	108	150
	Delivery pressure	bar	78	130	85
	Strokes	1/min.	32	21	24
	Delivery cylinder	Ø mm	230	230	250
	Stroke	mm	1400	2100	2100

Delivery line boom max. 85 bar. All data maximum theoretical.
** Unfolding height depending on the frame height of the vehicle

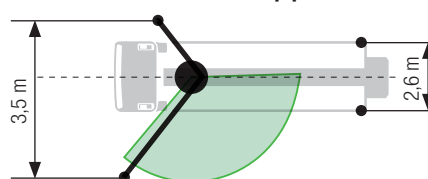
BSF 24-4 Reach information diagram, support



Standard – Full support



OSS – One-side support



Dimensions can differ depending on configuration.
Support width based on center of support leg.

Delivery scope standard equipment

Support

- Full support system
- Support plates (4x), in 2 magazines
- Swivel support plates

Control systems

- EOC 2.0 (Ergonic Output Control)
- Ergonic 3
- Ergonic Graphic Display 9,7" incl. Ergonic diagnosis interface
- Radio remote control with display

Core pump / Hopper

- Agitator rotation automatic, dep. on pump direction
- Agitator safety switch off (RFID)
- Central hopper lubrication, electric
- Hinged elbow with cleaning port
- Spectacle wear plate DURO 22
- Splash guard fixed
- Steps left and right, zinc-plated
- Wash-out port lid with locked slide pin

Cleaning

- Cleaning hose 8 m+2 m incl. bracket and nozzle
- Connection for water tank filling, both-sided
- Water outlet on hopper, for small quantities (1/2")
- Water pump, 160 l/min 25 bar
- Water tank 700 l

Delivery line

- Deck delivery line in boom delivery line quality
- Delivery line (1-layer)
- End hose 4 m DN125

Safety

- Connections for hydraulic emergency supply (boom)
- Guard rail on pedestal
- Hand rail right side
- Mushroom button for horn, yellow
- Towing eye

Lighting

- Control box lighting, LED
- Control points lighting, LED
- Hopper lighting, LED
- Light for illumination pump and water box, LED

Miscellaneous

- Container for sponge balls
- Delivery note box, plastic
- Operating instruction and spare parts manual (1x paper, 1x CD-ROM)
- Paintwork Putzmeister standard
- Side panel right/left foldable
- Tool kit

See quotation for exact serial delivery scope.
Comprehensive range of options available on request.