



Putzmeister



BSA 1405 D CLASSIC

High-Performance | Easy to Operate | High Reliability & Durability

Classic, Rugged, Reliable:- User-friendly for beginners and experts

With over 65 years of expertise, Putzmeister is a leader in concrete pumping, mixing, and placing solutions. Putzmeister's stationary concrete pumps are engineered to deliver superior vertical and horizontal pumping. Designed for the toughest job sites, they set and break their own records worldwide.

Putzmeister pioneered the first fully hydraulic stationary pump—our Classic Series. Class leading performance, simple to operate, easy to maintain, and built to last, it remains the industry's most trusted choice. While time-tested, its relevance and performance continue to lead the market.

Benefits At A Glance

- High-Performance Pumping
- German Engineering
- Easy Operations
- Easy To Maintain
- Lifelong Savings
- Putzmeister Support

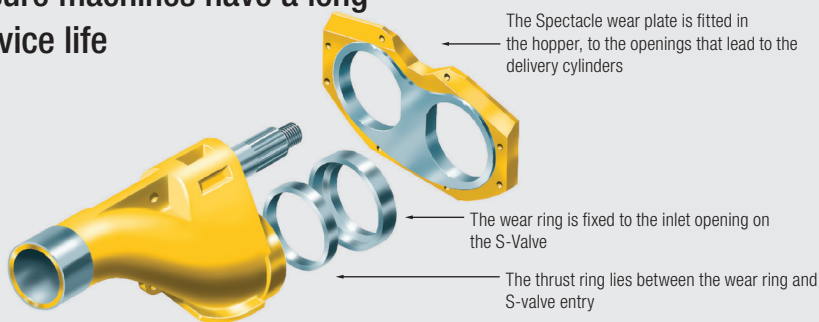


High-Performance Pumping

- 13% higher capacity hydraulic pump
- 6% higher output
- 7% higher delivery pressure
- Reliable high-rise pumping
- Pump long-distance with ease

GERMAN ENGINEERING: Rugged, Reliable, Durable

High-quality wear components ensure machines have a long service life

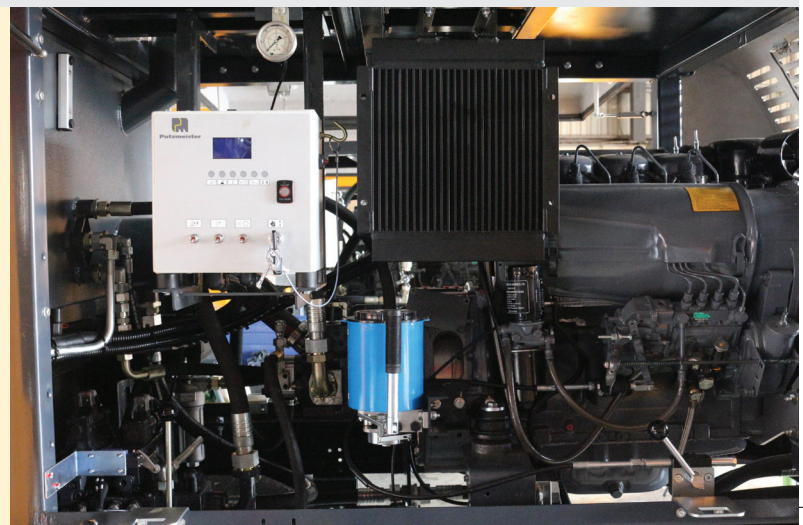


The S-Valve for Placing Difficult Concrete

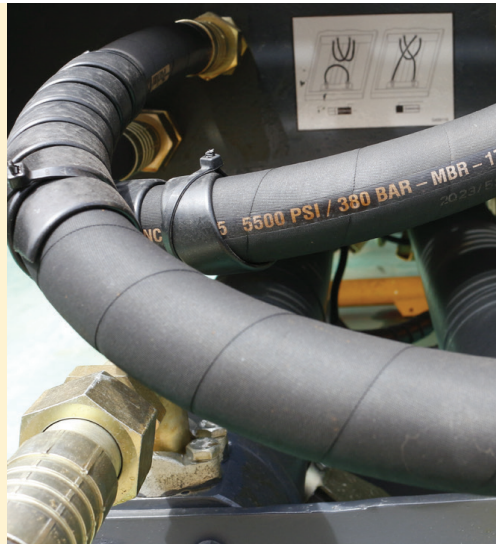
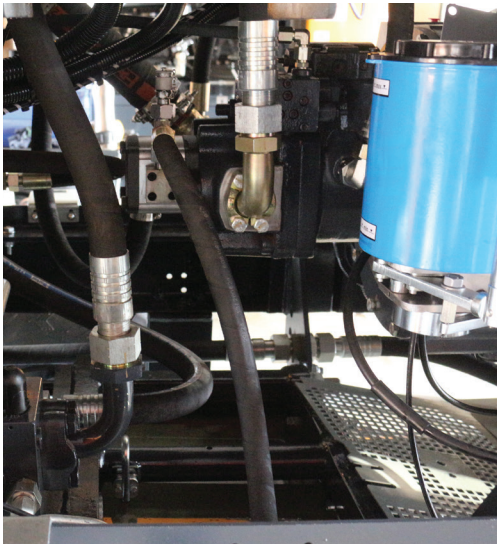
- The S-Valve that is manufactured out of thick-walled special cast steel is designed for difficult, abrasive concrete
- The automatic wear ring compensates for the uniform wear of parts and prolongs service life
- The wear ring optimally seals the system, preventing the bleeding of concrete fines and reducing the danger of blockages
- All parts of the S-Valve are easy to change, no need to dismount the hopper

Simple Controls, Easy To Operate Just work more comfortably

- 100% Hydraulic Control
- Simple control panel - easy to operate
- Ergonomically placed controls for comfortable operation
- Compact design - easy to transport and place at sites



Designed to Deliver Value



Convenient to Maintain Easily accessible so that everything runs smoothly

- Easy access to all machine parts
- Fewer, easy to replace components
- Hopper designed for convenient cleaning
- Long service intervals

Best In Class—Performance, Productivity, ROI

- Reliable high-performance pumping
- Long wear life of parts and long service intervals deliver savings
- Fewer, easy to replace components
- Robust build ensures long machine life and a highest in class resale value



Technical Specifications

BSA 1405 D Classic



Output up to	54/36* m ³ /h
Concrete Pressure up to	61/91* bar
Delivery Cylinder dia./stroke	200/1000mm
Strokes / minute (max. theoretical)	29/19*
Control System	VHS
Drive Unit Power	49 kW (Diesel)
Hopper Capacity	aprox. 600 L
Transfer Tube	S 2018 PN
Weight	3500kg

*Values for hydraulic fluid being fed to piston side



Genuine Service and Parts

#1 reason customers choose Putzmeister **AFTERSALES SUPPORT**

Your Putzmeister Machine is in the best hands with our team. We ensure a high level of service, maintenance and genuine parts; we take care of your machine like no one else. Why? **We know your machine better than anyone else!**



Trained service experts ensure correct diagnosis and service



Genuine Putzmeister spare parts for long wear life and superior performance



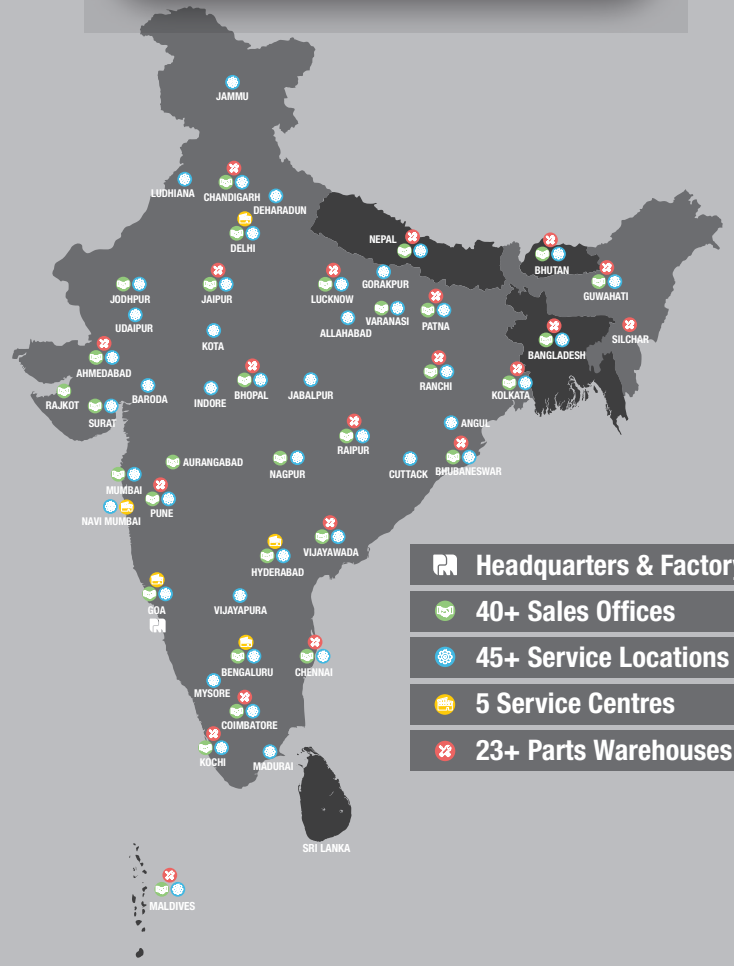
Operations and maintenance solutions for Peace of Mind



Service expert allocated on time for uninterrupted operation



Annual maintenance/ service contracts for extended machine life



USE GENUINE PUTZMEISTER SERVICE USE GENUINE PUTZMEISTER PARTS

Scan to download the list of Putzmeister Authorized Spare Parts Dealers and Warehouses



Scan to check out range of concrete equipment and to download our brochures



Putzmeister Concrete Machines Pvt. Ltd.

Plot No. N4, Phase 4, Verna Industrial Estate, Salcette - Goa 403 722. INDIA

Tel.: +91 (832) 6696 000 · Fax: +91 (832) 6696 300

Whatsapp: +91 91585 34123 · www.putzmeister.com



For all your support needs, contact.india@putzmeister.com

1800 - 267 - 2678

TOLL-FREE NUMBER FOR ENQUIRIES AND SERVICE REQUESTS