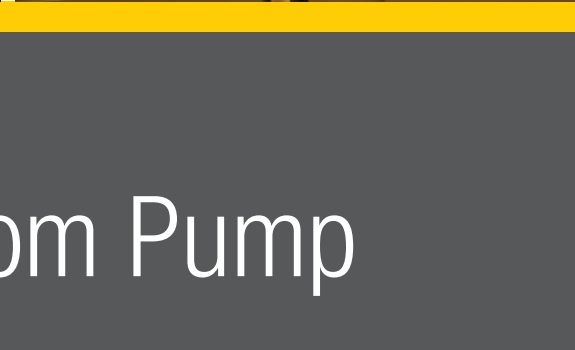
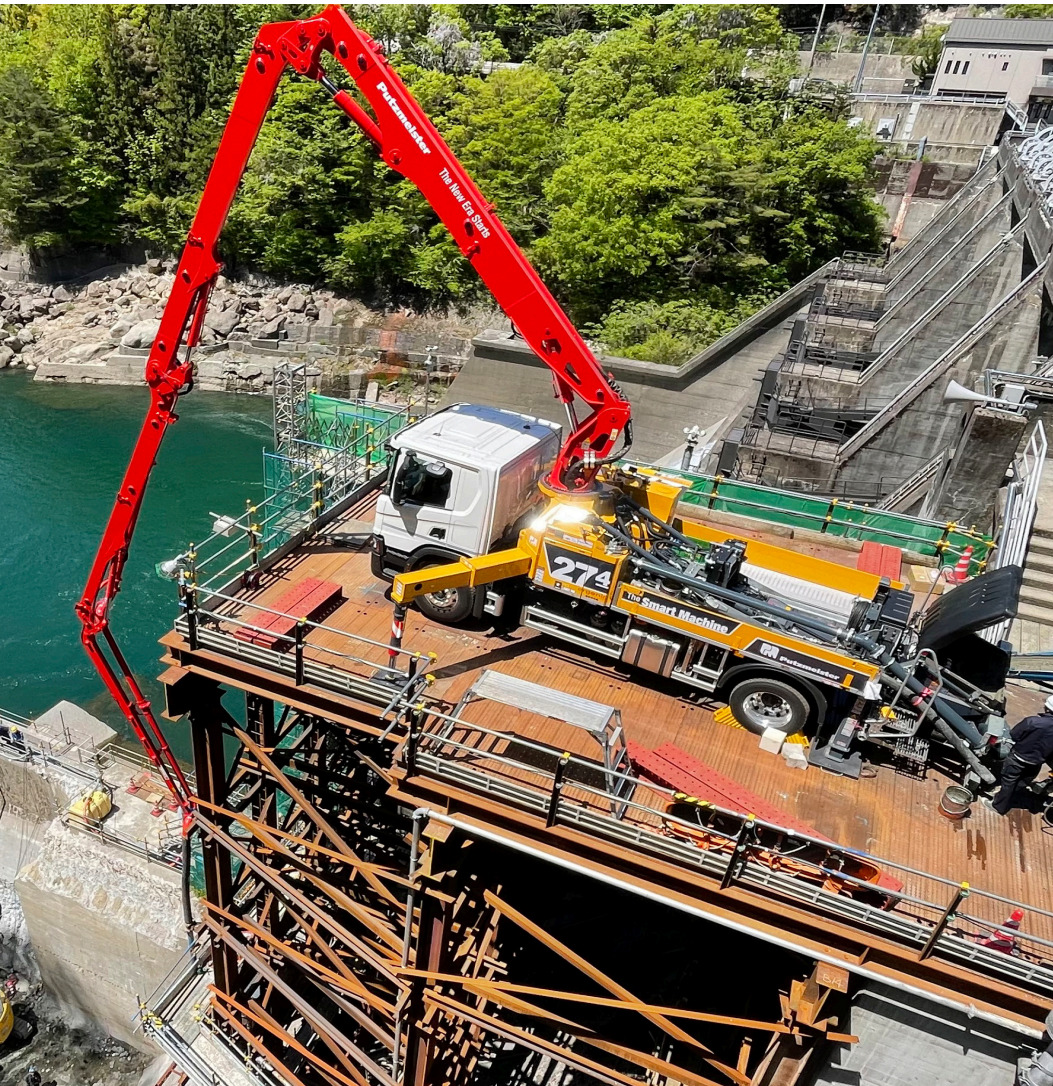




Putzmeister



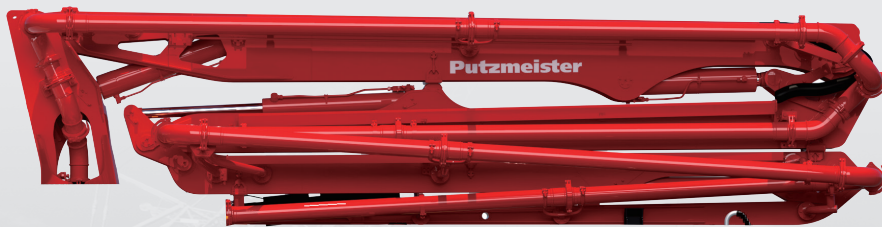
27Z Truck-Mounted Boom Pump

Technical specifications

Flexibility with the 27Z

Light weight Multi-Z folding boom

The newly designed 27Z-meter boom improves flexibility with a 100° a-angle and provides the highest boom on 2-axle trucks. Boom vibrations and wobbling are reduced by laying the delivery lines in neutral and straight arms. Service-friendly access, all pipe on one side of the boom, standardized pipe bends, and screwed pipe supports allow for quick delivery line replacement.



The boom at a glance

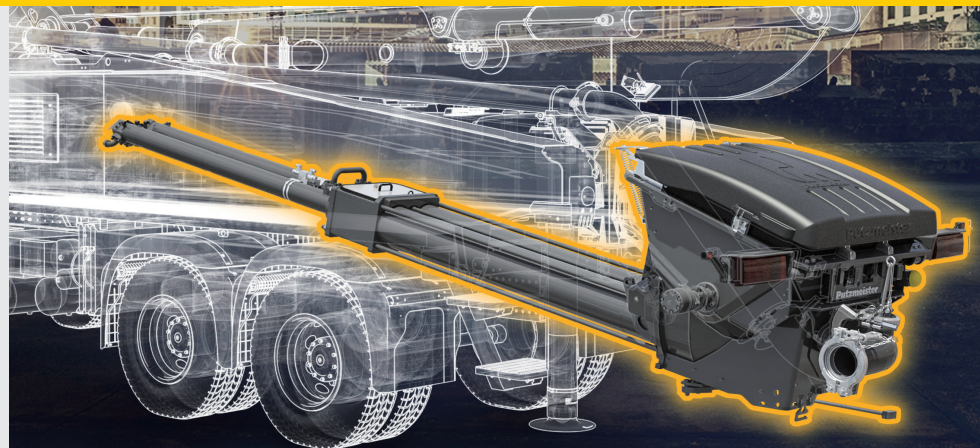
- Approx. 27 m vertical reach with 4 arms in Multi-Z fold system
- Flexible boom for many concrete applications
- Continuous delivery line with nominal diameter of DN 125
- Fast control response characteristics
- Increased safety from reduced boom vibrations

MULTI-Z
FREE FLOW HYDRAULICS
COMPACT
TRC PEDESTAL
27Z



Core pump systems

Advantage of Putzmeister's Free Flow Hydraulic systems (FFH) has been proven in the industry, providing high efficiency and less vibrations.



The all-new TRC boom pedestal

The TRC boom pedestal

Our new TRC design (Trapezium Compact) is a further development of our TRD system – now even more compact with double telescopic support legs with a 10% smaller support area.

The TRC not only saves a lot of space – 500 to 600 mm compared to the TRD – but also offers the option of infinitely variable support. The stability of the unit is also improved, supported by a reduced weight that allows for a higher payload.

10%
SMALLER
SUPPORT AREA
WITH IDENTICAL
REACH

TRD DESIGN

NEW TRC-DESIGN

500 – 600 mm

Ideal for any application

The 27Z is the perfect solution for pumping in inner-city areas, concreting bridges, hose applications, and much more thanks to the TRC pedestal.

- Lowest possible support area for inner-city pumping
- Flexible double telescopic support legs provide stability in any position
- Rear support cylinders for shorter paths in the working area
- Generous space for storage containers and hoses



Other features & options

Standard features

Concrete Pump Unit

- Multi-piece piston cups
- Free flow hydraulics
- S-Valve - 2318 hard-faced (9" to 7")
- RS 909 clean out hopper w/ solid polyurethane fold down back splash
- Hardox remixer paddles
- Hopper vibrator
- Hopper agitator safety shutdown via
- Radio Frequency Identification (RFID)
- Hard-chromed material cylinders
- Proximity switches w/ indicator
- Hydraulic outriggers - front & rear
- Snap-locks for outriggers & bubble level indicators
- 706 psi (28 bar) high pressure water pump
- 132 gal (500L) water tank
- Manual grease system - boom
- Autolube grease system - hopper
- Centralized lube locations
- Gauge Port Central (GPC)
- Loading decks for pipe & accessories
- Modular bolt-on flatpack
- Large side-mounted aluminum toolboxes
- Operator Supervision Warning System (OSWS)
- 5" delivery line on all boom & deck pipe
- Proline 2000 Putzmeister Pipe Technology
- 10 ft (3m) delivery hose w/ coupling (one end)
- Electric oil cooler
- Wash out kit & hose
- Light kit package at boom, pedestal, & hopper
- 4 outrigger pads w/ 2 side compartments
- Wireless & cable remote

Unit Control System

- Ergonic 3.0 w/ Ergonic Output Control (EOC)
- Standard world pattern
- Radio remote w/ Ergonic Graphic Display Remote Control (EGD-RC) w/ full proportionality & 20m cable back-up option
- Ergonic Graphic Display in control cabinet
- Cable remote w/ full proportionality
- Remote on/off of concrete pump & remote engine off

Miscellaneous

- Ship-away kit w/ basic maintenance tools
- Operational & safety manuals
- High quality paint finish



Other Available Options

Auto Lube Boom & Pedestal	Wash-out hose reel kit
High pressure washer (2000 psi / 138 bar)	Water tank heater
Outrigger lightbar	Squeeze valve air line installation
Partial Flow Filter / Dehydrator	Squeeze valve installation w/ PM EQV part

The concrete pump highlights

Optimal coordination thanks to EPS

EPS (Ergonic® Pump System) is a computer-aided control system that provides a smoother performance by reducing boom vibrations. In addition to EPS, EOC (Ergonic® Output Control) is an efficient module that controls the engine speed with lower fuel consumption, wear, and noise.

The pump at a glance

- Pump geometry is optimally coordinated to all common types of concrete
- Service-friendly control system with free flow hydraulics for consistently high oil quality
- Agitator safety shutdown via RFID (Radio Frequency Identification)
- Optimized switchover procedure with SN control system and Push Over to avoid wear-intensive pressure peaks
- Wear-resistant design of S transfer tube switch for long service life
- Convenient and simple operation with Ergonic® 3.0
- Automatic agitator direction of rotation corresponds to pumping direction

Smooth operation

Smooth, optimized pumping with EPS and EOC, protects the pump and the vehicle

Hopper

Optimized hopper with grille, improved shape, and optimized S transfer tube storage

Component replacement

Easy replacement of components due to bolt-in concept and minimum operating costs with maintenance-free components, avoidance of special components, and easy accessibility.

LONGER SERVICE LIFE
LOW MAINTENANCE
OPTIMIZED EFFICIENCY
SERVICE-FRIENDLY
SIMPLE OPERATION
BEST PERFORMANCE!

Ergonic® 3 – highlights

The new Ergonic® 3 – clear, fast, and safe

- **Continuous operating concept** for all Putzmeister products with the same functions and displays – whether on the radio remote control or the Ergonic Graphic Display (EGD).
- **Intuitive work and quick reactions** thanks to a clear menu structure and intuitively arranged functions.
- **Full overview** of machine status on the radio remote control and EGD (incl. valves, sensors, and LEDs on fuses).
- **Detailed fault management:** Faults are easy to detect and rectify – even without a Putzmeister technician.
- **Multi-level emergency operation** keeps the machine running even in the toughest conditions.

AS EASY TO OPERATE
AND MORE INTUITIVE
THAN EVER BEFORE

ERGONIC® 3



Pumping made smart

If our concrete pumps are the heart of Putzmeister machines, then the Ergonic system is the brain.

As a switching center, the microprocessor-supported control systems regulate the functions of concrete pumps and placing booms.

Always by your side – Ergonic® 3 inside

EPS Ergonic Pump System

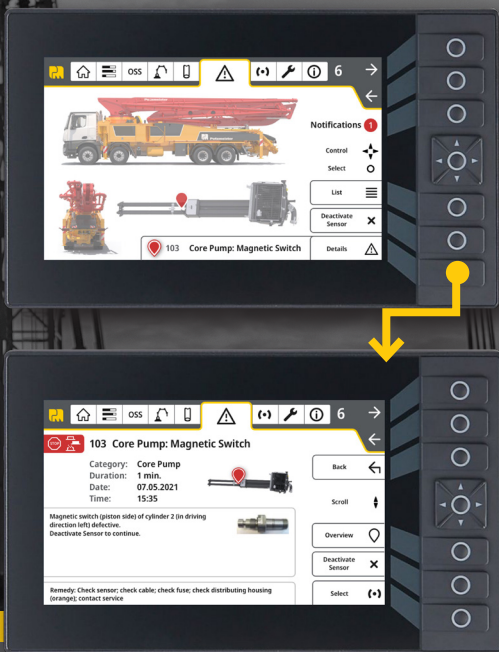
Takes control of the concrete pump for optimized pumping.

EOC Ergonic Output Control

Regulates the optimum motor speed for smooth operation with fuel efficiency and low wear.

Ready for the future

- **A future-oriented solution** with interfaces for future expansions and easy software updates.
- **Service-friendly concept** with services that can be accessed and implemented efficiently.
- **Clearly guided fault management** on the radio remote control and display.



The best of two worlds

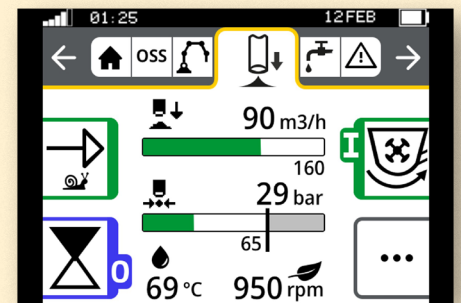
Ergonic[®] 3 is the logical evolution of Ergonic[®] 1 and Ergonic[®] 2.

Proven features are maintained, others developed further, and new and future-oriented functions are integrated.

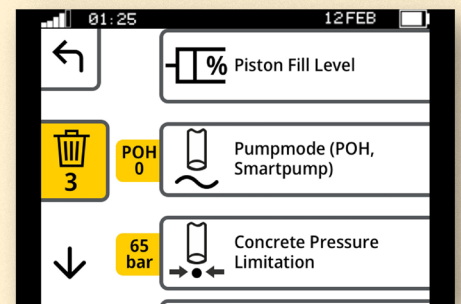
- Experienced Putzmeister customers quickly become familiar with operation, making the switch incredibly easy.
- New customers will need little training or instructions since operation is so intuitive.
- Once learned, a wide variety of machine models can be operated.

Keeping an overview in every situation

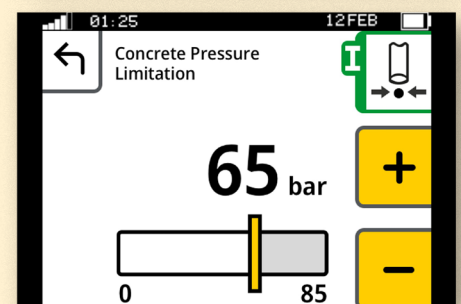
- The static menu bar guides users through the available functions.
- Neatly and intuitively arranged functions.
- Simple menu structure with a maximum of two submenu levels.
- Main menu with all standard functions and additional details in submenus.



Main menu



Submenu level 1



Submenu level 2

SIMPLE OPERATION

Easy and intuitive, for all machine operators.

RELIABLE OPERATION

With a comprehensive fault management.

DETAILED FAULT MANAGEMENT

Comprehensive fault messages with suggested solutions.

You can rely on Putzmeister – service, parts, and training

Everything that sets service apart

Putzmeister provides first class service with swift assistance, meaningful advice, and a reliable supply of genuine Putzmeister parts and accessories in over 120 countries.

Ideally placed to support you

We continuously train our service technicians, provide a close-knit information network, and the latest equipment to consistently strive to meet our customers' needs.

Our employees have all the relevant technical information about your machine at their fingertips, allowing us to provide you with the best possible support for emergencies, repairs, or preventive maintenance.



Our services for cost-effective work

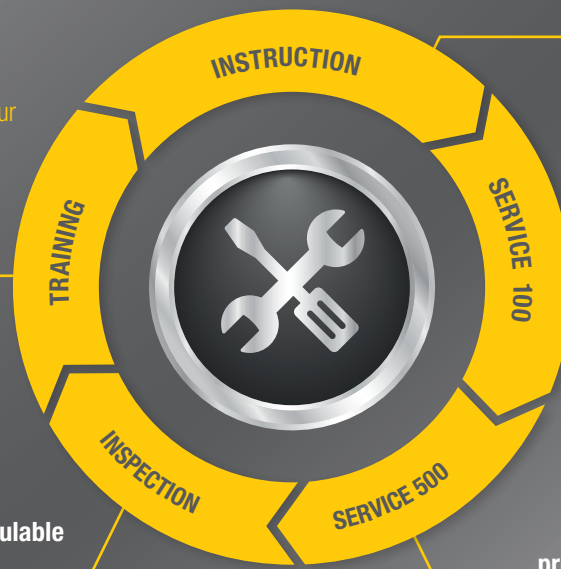
The Putzmeister service support points offer you these services - all provided by our experienced service staff:

Customer training – benefit from expert knowledge

Practice-oriented learning offers many benefits: Master the machine and all of its special features, use the machine to optimum effect, reduce operating costs, and avoid operating errors.

Mandatory machine inspection – calculable costs instead of incalculable failures

Visual inspection and functional check of components for 100% safety. The hydraulic system with cylinders, electrical system, and core pump are also inspected.



Introduction at handover – everything correct from the get-go

You and your team can adapt perfectly to all features and innovations.

100 hours of customer service – avoid potential sources of error

Receive a status report on your concrete pump per the Putzmeister service plan.

500 hours of customer service – protect your investment, retain your value

Our technical customer service team is the number one choice for checking the safety and wear of your machine.



Putzmeister Academy - Service Schools

We want to make sure you get the most from your Putzmeister equipment. To maximize the use and profitability of your investment, take advantage of the regular training seminars at our Wisconsin headquarters.

Service Schools cover maintenance, operation, and inspection of boom pumps, Teelbelts, and Thom-Katts. They include hands-on training, problem-solving exercises, hands-on presentations, and safety training.



Genuine parts for maximum availability

We use only genuine Putzmeister parts in our workshops to guarantee consistent quality. You can be sure that your machine meets the tough requirements with maximum performance and availability.

- Immediate availability worldwide through our extensive dealer network
- Longest possible service life and maximum reliability
- Minimal maintenance and repair work thanks to high-quality materials and tested quality
- Quick and easy replacement with precise fitting and no variations in quality
- Safety for your customers, your personnel, and your investment

Product and training information — whenever, wherever

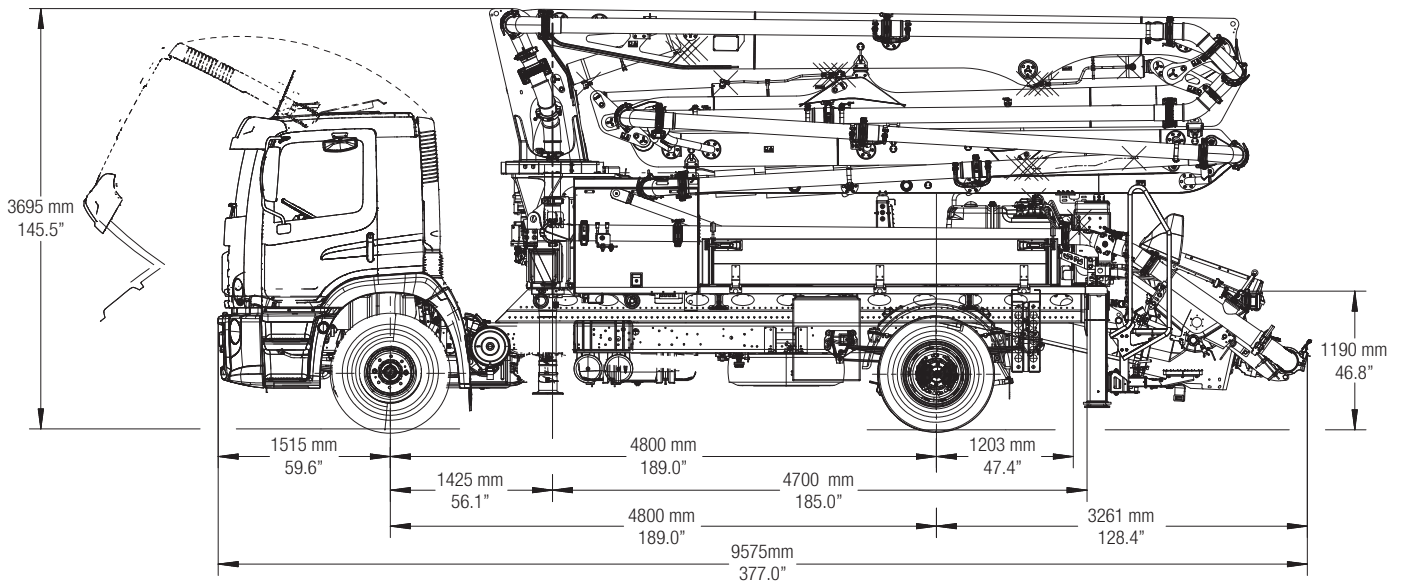
We consistently provide the most up-to-date product and training information through our YouTube channel. From the comfort of your own home to on the jobsite, you have access to hundreds of videos that showcase the latest and greatest Putzmeister products, how-to videos, demonstrations, and much more.



27Z-Meter Truck-Mounted Specifications

Machine Dimensions

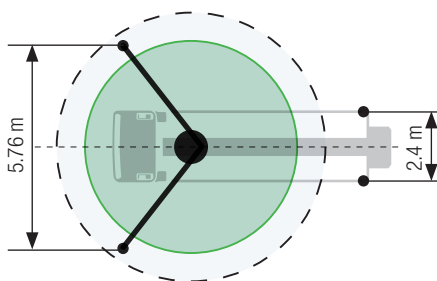
	Imperial	Metric
Length	31' 5"	9.58 m
Width	8' 2"	2.50 m
Height	12' 2"	3.70 m
Wheelbase	189"	4,800 mm



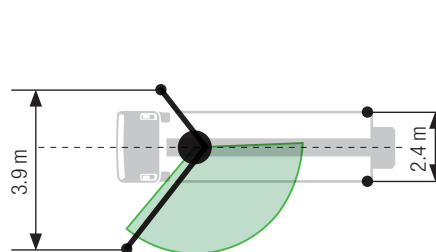
Outrigger Spreads

	Imperial	Metric
Front — L - R hydraulically extended out & down	18' 11"	5.76 m
Rear — L - R lift cylinders extend down	7' 11"	2.40 m

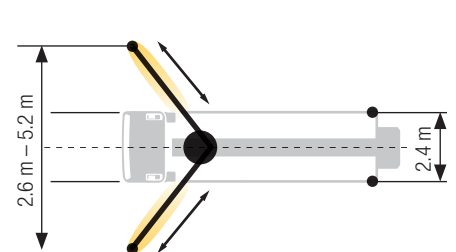
Standard



One-Side Support (OSS)



Intelligent Support Assistant (ISA)



Weight

	Imperial	Metric
Front axle weight	13,324 lbs	6,044 kg
Rear axle weight	23,000 lbs	10,433 kg
Approximate total weight	36,324 lbs	16,476 kg

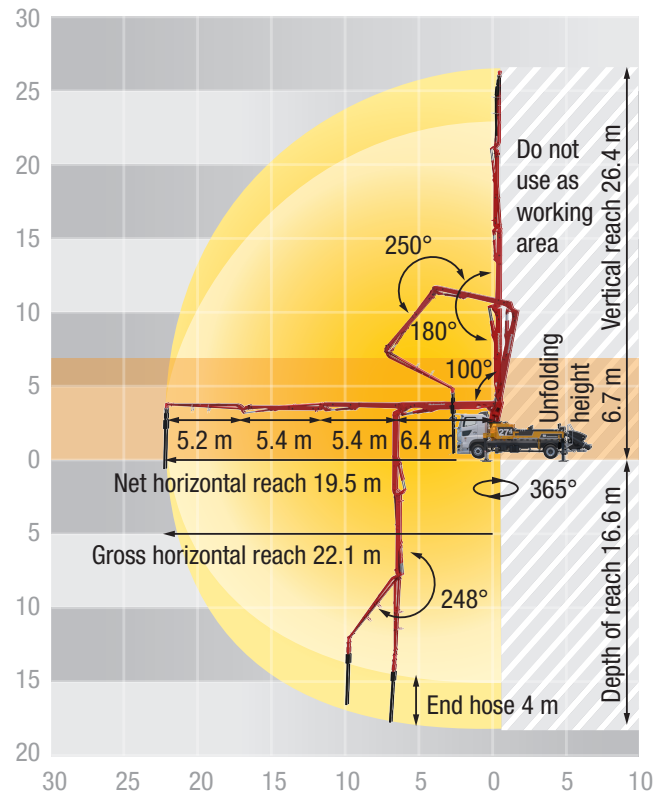
Boom		Range Diagram	
Z-folding Design	Imperial	Metric	

Height & Reach		
Vertical reach	86' 7"	26.4 m
Horizontal reach	72' 6"	22.1 m
Reach from front of truck*	64' 0"	19.5 m
Reach depth	54' 6"	16.6 m
Unfolding height	22' 0"	6.7 m

4-Section Boom		
1 st section articulation	100°	
2 nd section articulation	180°	
3 rd section articulation	250°	
4 th section articulation	248°	

1 st section length	21' 0"	6.4 m
2 nd section length	17' 9"	5.4 m
3 rd section length	17' 9"	5.4 m
4 th section length	18' 5"	5.2 m

General Specifications		
	Imperial	Metric
Pipeline Size (ID) metric ends	5"	125 mm
Rotation	365°	
End hose — length	10' 0"	3.00 m
End hose — diameter	5"	125 mm



Based on Model BSF27-4.11H VW Constellation 17.280 6x4/4800.

Dimensions will vary with different truck makes, models, and specifications.

Weights are approximate and include pump, boom, truck, driver, and full fuel tank. Varies with options selected.

Maximum theoretical pump values listed.

* Applies to units mounted on a PMA stock truck.

• Standard delivery line system rated at max line pressure of 1,233 psi (85 bar)

Pump		27Z.11 H	
		Imperial	Metric
Output	Rod side	—	—
	Piston side	158 yd ³ /hr	121 m ³ /hr
Pressure	Rod side	—	—
	Piston side	1,189 psi •	82 bar •
Material cylinder diameter		9"	230 mm
Stroke length		55"	1,400 mm
Maximum strokes per minute	Rod side	—	—
	Piston side	—	35
Volume control		—	0-Full
Vibrator		—	Standard
Hard-chromed material cylinders		—	Standard
Hydraulic system		—	Free Flow
Hydraulic system pressure		5,221 psi	360 bar
Differential cylinder diameter		4.3"	110 mm
Rod diameter		2.5"	63 mm
Maximum size aggregate		2.5"	63 mm
Water tank — pedestal		132 gal	500 L

Here for you every step of the way

Our Putzmeister Promise

We build machines that increase your production and give you a competitive edge – and these machines are continuously developed. Innovative technologies and durable quality need to adapt to your ever-changing daily challenges. Our products stand for optimum output with low fuel consumption, wear, and costs.

Our customers will always have a thinking, intelligent partner in all their undertakings; a partner that will deliver to their exact requirements regardless of the complexity of the task or the remoteness of the scale. With knowledge and understanding backed by experience, we approach every task with renewed enthusiasm – be it a small scale construction or a mass assignment, tight deadlines, or unique concreting and manufacturing needs.

Your Putzmeister Team



Authorized Distributor © Putzmeister America, Inc. 2024. CT 4993-3 EN.
Photos and drawings are for illustrative purposes only and may not depict the final model.



Putzmeister

Putzmeister America, Inc.
1733 90th Street
Sturtevant, WI 53177 USA
Putzmeister.com

Phone (262) 886-3200
Toll-free (800) 884-7210
Fax (262) 884-6338
pmr@putzmeister.com