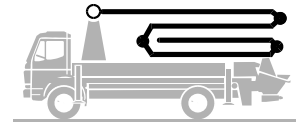


# Truck-mounted concrete pump

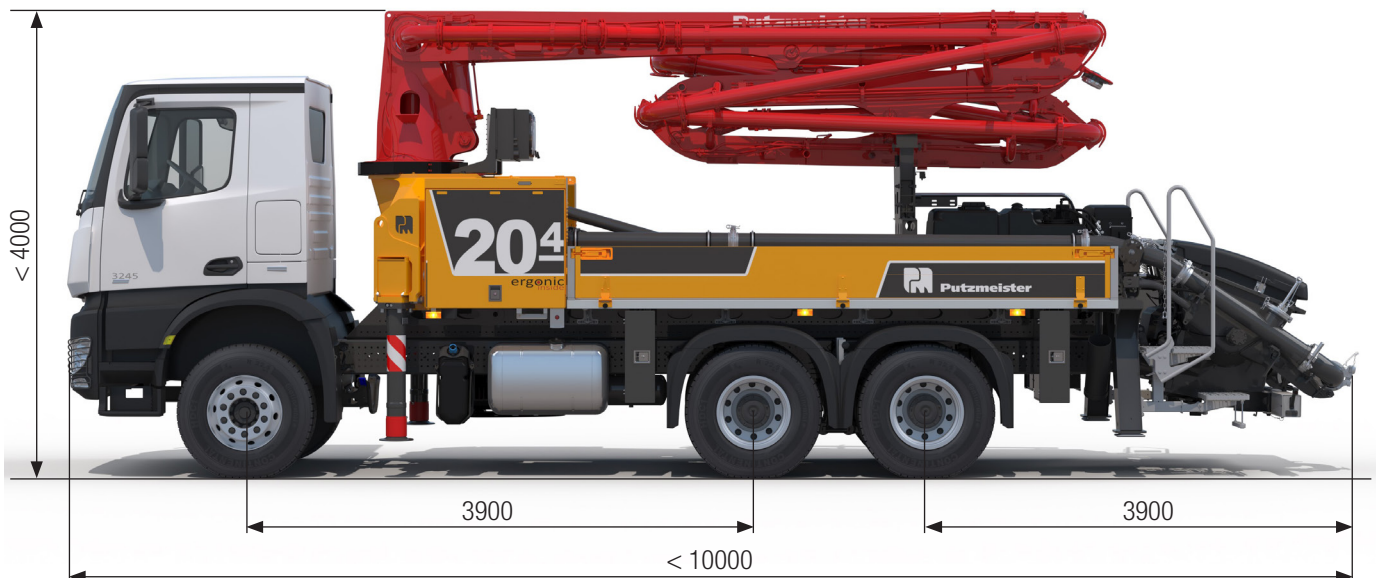
# BSF 20-4.11 H

# .15 i LS

Output up to 150 m<sup>3</sup>/h  
 Delivery pressure up to 85 bar\*



**ergonic<sup>®</sup>**  
 inside **3**



Note: Standard version. Dimensions and weights depend on truck, pump model and equipment.  
 Dimensions in mm. Example based on Mercedes Benz Arocs 2636.  
 For illustration only.

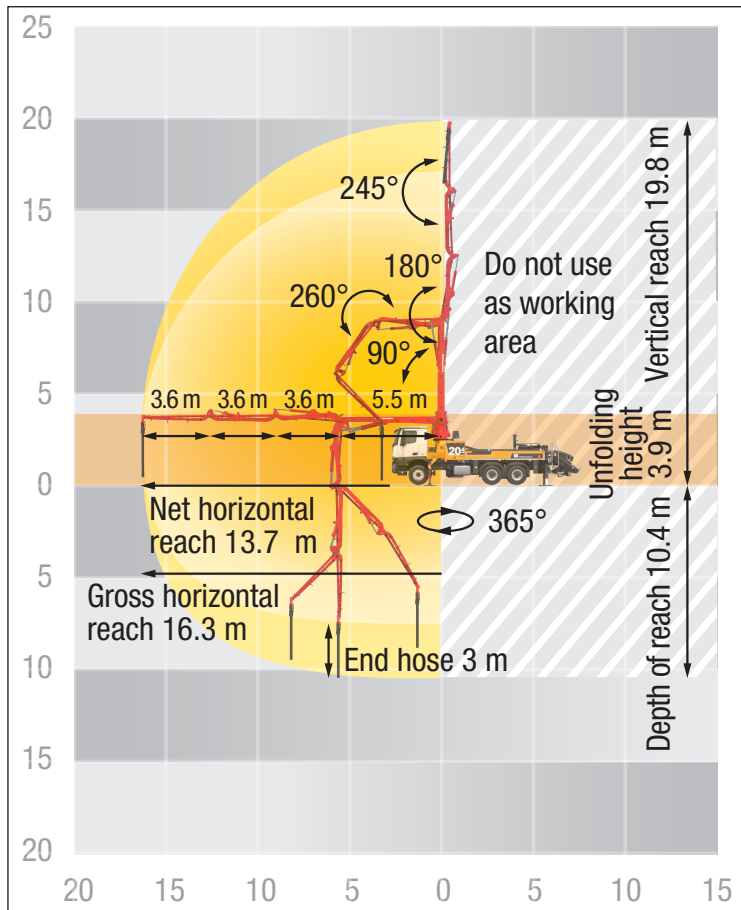
## Technical data

Boom M 20-4			
Sections			4
Reach height	m		19.8
Horizontal reach	gross	m	16.3
	net	m	13.7
Reach depth max.	m		10.4
Unfolding height	m		3.9**
End hose length	m		3
Folding system			ZR
Delivery line			DN 125

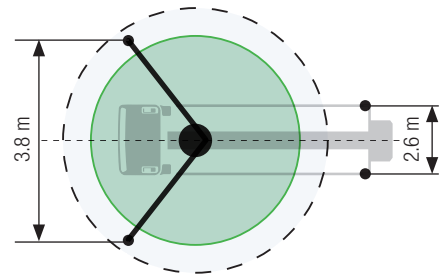
Pump	BSF	.11 H	.15 i LS
Output	m <sup>3</sup> /h	110	150
Delivery pressure	bar	78	85
Strokes	1/min.	32	24
Delivery cylinder	Ø mm	230	250
Stroke	mm	1400	2100

Delivery line boom max. 85 bar. All data maximum theoretical.  
 \*\* Unfolding height depending on the frame height of the vehicle

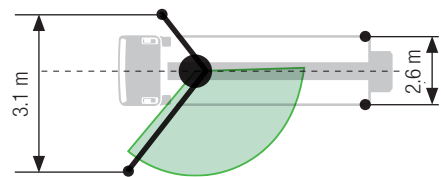
## BSF 20-4 Reach information diagram, support



### Standard – Full support



### OSS – One-side support



Dimensions can differ depending on configuration.  
Support width based on center of support leg.

## Delivery scope standard equipment

<b>Support</b>	<b>Cleaning</b>	<b>Lighting</b>
Full support system	Cleaning hose 8 m+2 m incl. bracket and nozzle	Control box lighting, LED
Support plates (4x), in 2 magazines	Compressed air connection, rear side	Control points lighting, LED
Swivel support plates	Container for sponge balls	Hopper lighting, LED
<b>Control systems</b>	Operating position at hopper to drain water pipe	Light for illumination pump and water box, LED
EOC 2.0 (Ergonic Output Control)	Water tank filling, one-sided, left	<b>Miscellaneous</b>
Ergonic 3	Water outlet on hopper, for small quantities (1/2")	Centralized lubrication system, electrical, incl. A-Joint
Ergonic Graphic Display 9,7" incl. Ergonic diagnosis interface	Water pump, 160 l/min 25 bar	Delivery line elbows 45° extended on both sides, reduced
Radio remote control with display	Water tank 700 l	Delivery note box, plastic
<b>Core pump / Hopper</b>	<b>Delivery line</b>	Operating instruction and spare parts manual (1x paper, 1x CD-ROM)
Agitator rotation automatic, dep. on pump direction	Deck delivery line in boom delivery line quality	Paintwork Putzmeister standard
Agitator safety switch off (RFID)	Delivery line PROLINE 2000 (2-layer)	Side panel right/left foldable, 400 mm
Hinged elbow with cleaning port	End hose 3 m DN125	Tool kit
Rubber collar on concrete hopper	<b>Safety</b>	
Spectacle wear plate DURO 22	Connections for hydraulic emergency supply (boom)	
Steps left and right, zinc-plated	Guardrail right side	
Wash-out port lid with locked slide pin	Mushroom button for horn, yellow	
	Towing eye	

See quotation for exact serial delivery scope.  
Comprehensive range of options available on request.