



**Putzmeister**



# Truck-mounted concrete pumps

The full range for the Middle East and North Africa



# Pumps that make construction dreams become reality

An Arabic proverb says “mountains and mountains do not meet each other, but people and people do”.

In addition to its own sales organization and subsidiaries all over the world, Putzmeister has also been working with specialist dealers and local sales partners in the Middle East since the early 1970s. As a shining example of commitment and reliability Putzmeister's presence in this region was further strengthened in 2006 by the establishment of a representative office in Dubai offering support to our customers and business partners in the Middle East. We look back on 50 years of presence in this region, in which we have gained significant experience in understanding local industry requirements and the challenges our machines have to cope with on a daily basis, often more than 20 hours continuously per day. In the end, it was always the personal contact to our customers that allowed us to understand precisely how we could improve on our quality and services, incorporate the

experiences we made in our research and development and strive to continuous perfection.

The trust that customers have placed in us in this region, fulfills us with pride and great joy today, which is so valuable to us. But the job is not done here. More than ever, we see ourselves committed to continue supplying the highest grade of quality in this industry and offer the best customer service to our clients and the industry.

We are committed to this region and Putzmeister is represented today by a team of service, product and spare parts experts that can react quickly to our customers' needs. We are looking forward to face the upcoming challenges and are grateful to continue participating in the development and dynamic growth of this region.

## No two jobs are the same

Our application reports are more like travelogues, which is no wonder because Putzmeister truck-mounted concrete pumps are highly rated all over the world:

### Project: Ciel Tower Dubai

Several Putzmeister truck-mounted concrete pumps are contributing to the world's largest hotel – the Ciel Tower Hotel in Dubai. It will be the tallest hotel in the world with a height of 360 meters and will feature 1042 luxurious suites across 82 floors. The Ciel Tower has already won numerous awards and is likely to be completed in 2023.

### Project: Riyadh Metro

BACS, a consortium consisting of Bechtel, Almbani, Consolidated Contractors Company and Siemens, is responsible for the design and build of Lines 1 and 2 of the Riyadh metro network. These two lines will be part of the six-line metro which will run for a total length of 176km across the city and include 85 stations.

“A truck mounted concrete pump M56-5 pumps the concrete vertically into a shaft to a stationary concrete pump BSA1409D. From the BSA concrete pump, an SK125 delivery line runs into the tunnel and end on a slab formwork to feed several RV12 lifts,”



### Project: New Alamein City

As the Egyptian government prepares to relocate all ministries to the new Administrative Capital by end of 2021, ready-mix and construction companies are working around the clock to meet delivery deadlines. To insure reliability and high performance, renowned companies such as Cemex, Redcon and

Red Sea Construction have put their trust in Putzmeister and have purchased from Putzmeister's local dealer to complete such an up-scale project. As seen in photo, a M56-5 Putzmeister construction pump operating at the Ministerial District at the New Capital.





# Work with Putzmeister, because everything fits

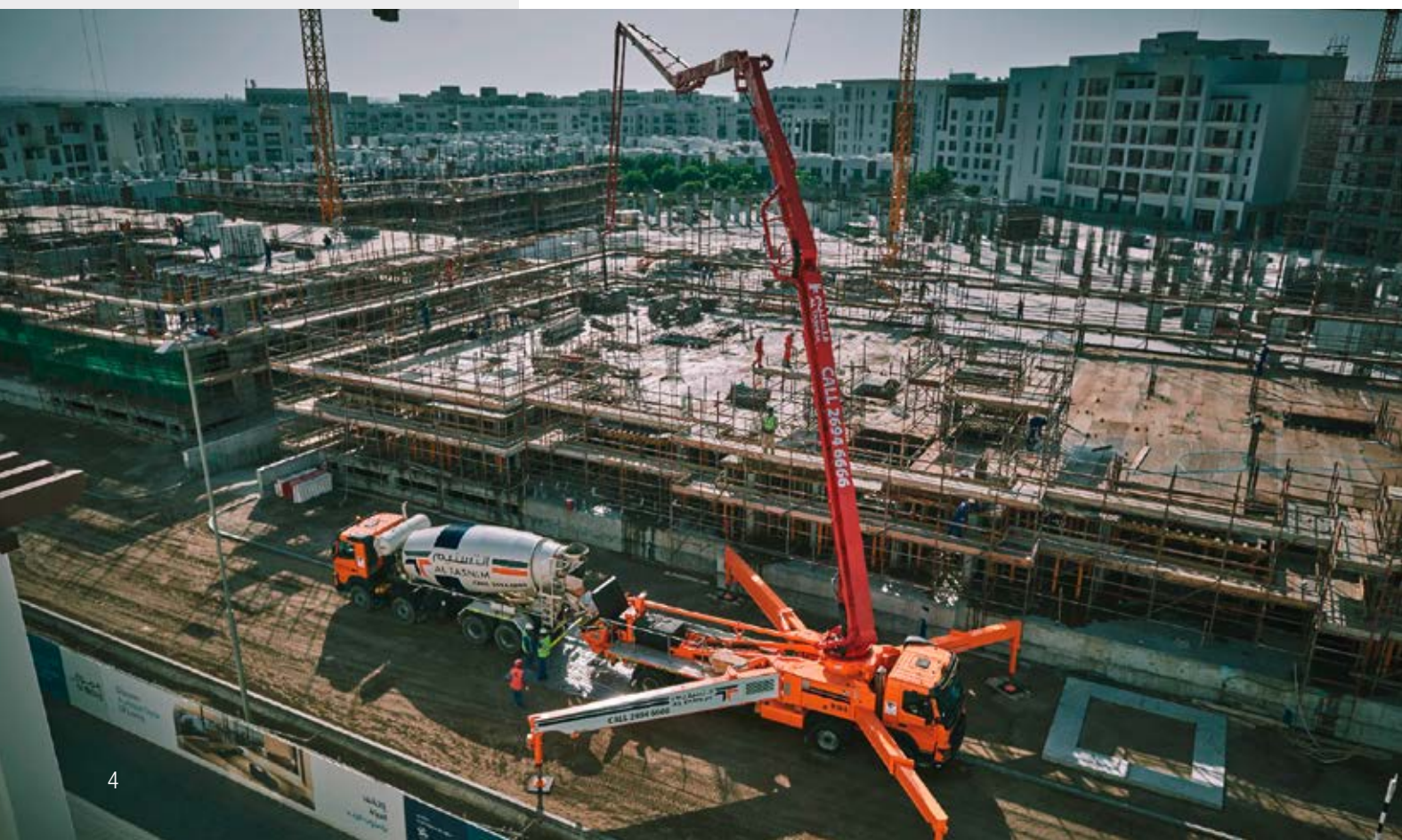
A vision is only good  
when it is feasible –  
we make it happen

We cannot assume responsibility for managing your projects but can make a significant contribution to ensuring they succeed: With distributor booms between 30 and 60 m in length that cover a wide range of horizontal and vertical reaches encountered in all customary truck-mounted concrete pump applications. With folding types flexibly adapted to the application and vehicles that are so compact that the route to the site of concrete placement never seems like an obstacle course. With low-wearing materials and a machined finish that can withstand even prolonged periods of intensive operation.



You will also appreciate the speed with which the machine is set up and dismantled, along with the silent low-wearing pumping process and simple, ergonomically advanced operation. All of this is combined with a wide selection of efficient pumps that boast an array of components adapted perfectly to one another in a re-fined geometry.

The bottom line: Investing in high-performance products from Putzmeister always pays dividends. Twinned with a high resale value, the total sum of the purchase price together with lower energy, maintenance and service costs over the long life of the machine, make the investment more than worthwhile.



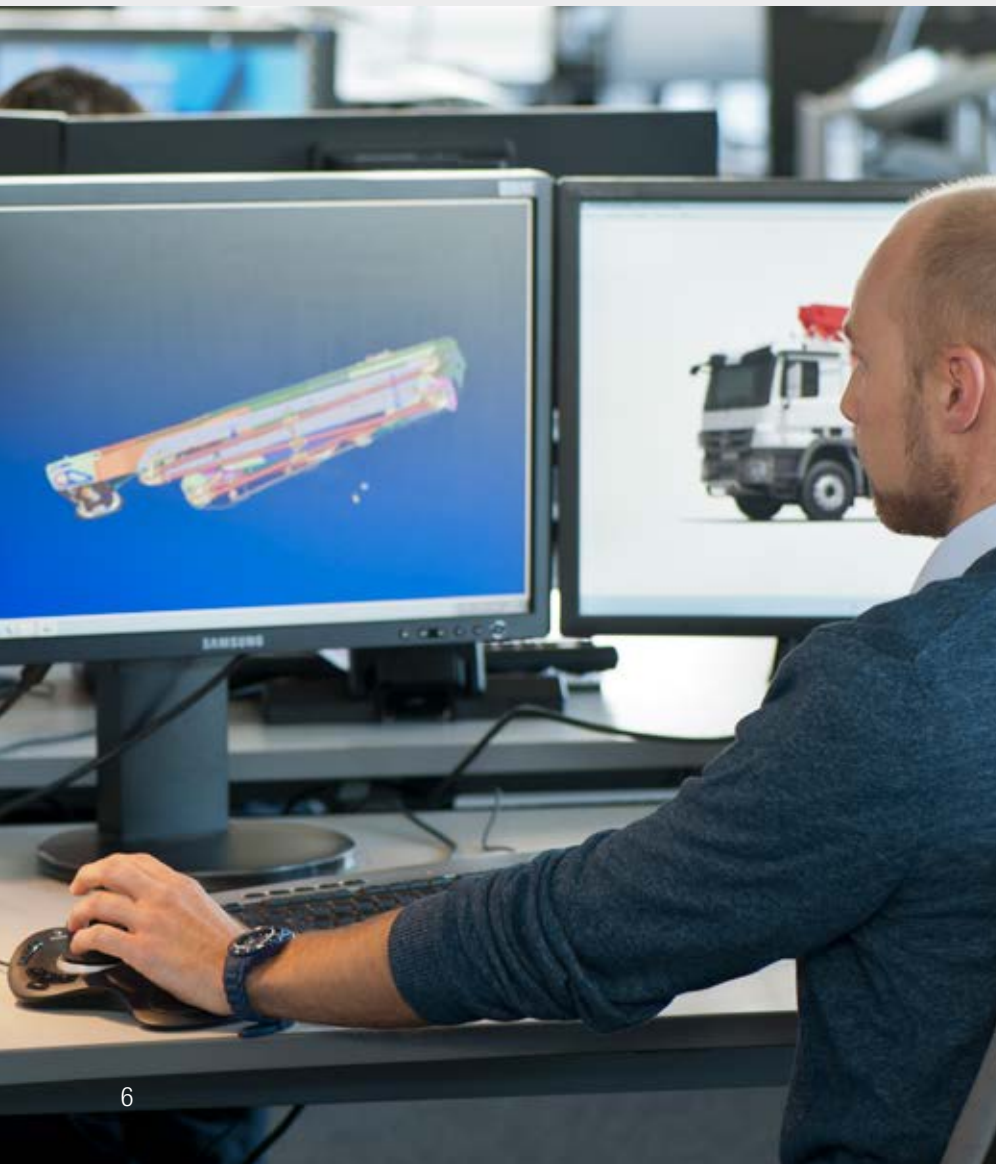


# Putzmeister through and through

## Quality that you can rely on, day after day

Do you have high expectations of your machinery? We do too because it is our job to develop and produce construction machinery that delivers an outstanding performance every day on the construction site, satisfies all technical requirements and leaves nothing to be desired in terms of user-friendliness. We could sit back with a sense of self-satisfaction, but we don't because we want to design lighter, stronger distributor booms to allow you to utilise your weight reserves for equipment and accessories.

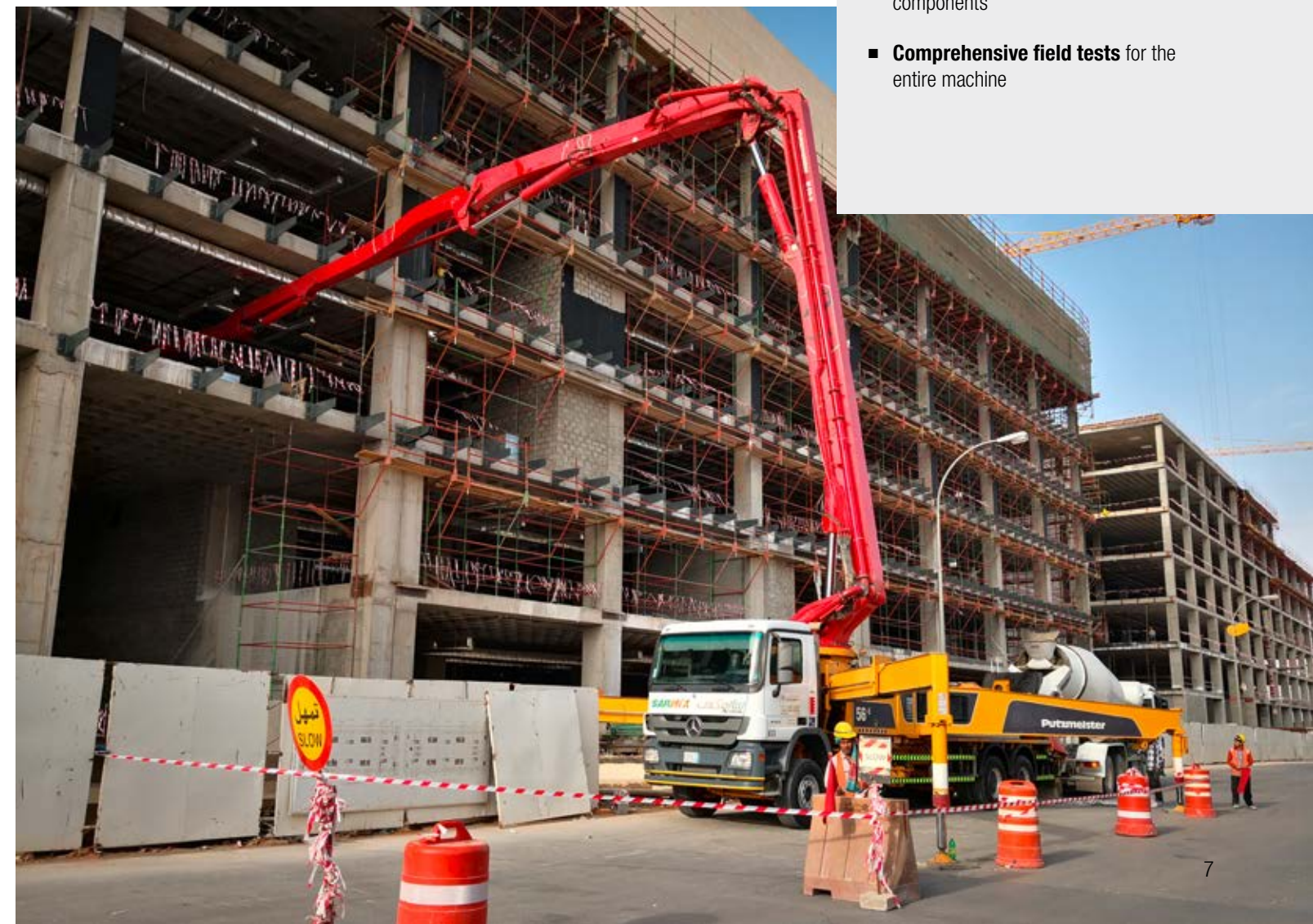
Also, we do not like to take wear for granted. Our restlessness has led to the continuous further development of our products as well as the use of innovative 3D-CAD programs, FE analyses, welding robots for creating perfect welded seams and feedback from our customers to assist in the implementation process.



## Harder than reality

The most important thing of all is that innovations are proven in practice. Up to now, our products have already been through the mill. Extensive tests make sure that on the construction site, there is one thing you can rely on without a shadow of a doubt: Your Putzmeister machine.

- **Lifetime simulations** for placing booms
- **Wear tests** for delivery lines, spectacle wear plates, etc.
- **Pulse tests and burst pressure tests** for delivery and hydraulic hoses
- **Climate, temperature and spray water tests** for all machines and their components
- **Comprehensive field tests** for the entire machine





# Outstanding placing booms

## Anyone who has a choice of options can select the best one

Not only can you choose between different vertical reaches, but also between a selection of booms with 4, 5 or 6 arms in a Z-fold system, roll Z-fold system or Z-roll fold system to increase flexibility and versatility in practical applications.

Streamlined kinematics on all models are designed to make optimal use of the space available in the working area.

Distributor booms from Putzmeister are manufactured exclusively from components with a high resistance to wear and parts that are close to maintenance free. Special components have been omitted in favour of standard components. Good accessibility makes service and repair work quicker, easier and more efficient.



## Benefits at a glance

- Choice between different reaches and booms with 4, 5 or 6 arms in Z fold system, roll-Z fold system or Z-roll fold system for greater **flexibility and versatility in all applications**
- **Virtually no dead zones** on either folding type
- **Distributor booms manufactured from low-wear, low-maintenance components**
- **Good accessibility** to all components
- Boom control with **direct response characteristics**
- Minimal boom vibrations ensure comfortable handling

## Stability in the smallest space

Job sites often have only limited set-up conditions, because they are in built-up areas or on heavily-used roads. Whether or not truck-mounted concrete pumps can be used therefore depends largely on the support dimensions. OSS (One Side Support) offer distinct advantages here:

- **Dramatically-reduced support widths** when using OSS
- **Flexible range of applications**
- **Fewer obstructions of the surrounding area**, such as traffic



M56 with and without OSS activated



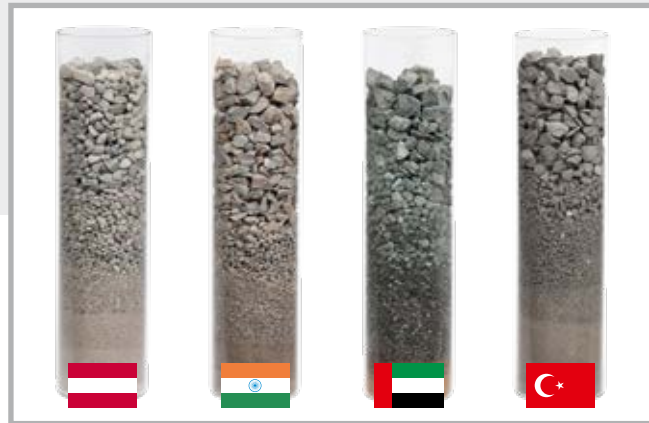
# Pumps that can handle almost any kind of concrete

## Many mixes are special – Putzmeister pumps are too

Flowing concrete wears anything it comes into contact with. Abrasion and other damage to components such as hoppers, transfer tubes, agitators, and delivery lines are unavoidable. The extent of the wear depends on the composition of the concrete. Concrete differs significantly from country to country and even within a country.

The ingenious geometry of Putzmeister concrete pumps was designed for all standard concretes. Delivery and drive cylinders operate in perfect harmony with one another to ensure the machine performs outstandingly in combination with all other components. As a result, our pumps can deliver heavy concrete at output rates of up to 200 m<sup>3</sup>/h with ease.

Specific details such as durable delivery pistons, series standard chrome-plated delivery cylinders and the S transfer tube system designed by Putzmeister ensure that all machines are able to withstand long periods of intensive use.



Examples of concrete mixes from 4 countries (from left to right): rounded gravel from Austria, broken stones from India and Dubai, the sample of aggregate from Turkey on the far right was particularly sharp and hard. The grading curves of the aggregate range from fine (bottom) to coarse (top).

## The S transfer tube – the wear-resistant transfer tube that ensures the coarsest mixes are delivered in an even flow

The S transfer tube is used for good reason in truck-mounted concrete pumps from Putzmeister. The impressive tube is highly versatile in delivering difficult concrete mixes such as hydro-concrete or mixes consisting of broken quartz, granite or basalt.

In order to handle such wear-intensive materials, particular emphasis was placed on a long service life. The S transfer tube has therefore been reinforced with additional welding, the service intervals are considerably longer and the availability of the machine is greater than other systems. One other advantage is the quick, smooth switchover process, which ensures a virtually continuous flow of concrete and minimises vibrations on the machine.



## Advantages of the S transfer tube:

- **Operates quickly and quietly** even on viscous, wear-intensive and coarse-grained mixes
- **Long service life and service intervals** ensure a high degree of machine availability
- **Extended machine lifetime** due to welded wear layer
- **Simple replacement** of the gate valve whenever required
- **Optimised switch over process and fewer vibrations on the machine** and boom thanks to the computer-controlled hydraulic system (EPS)

## Technical data – Pumps

Type	Output m <sup>3</sup> /h	Pressure bar	Stroke mm	Cylinder Ø mm	Strokes/min
16 H	160/108*	85/130*	2100	230	31/21*
16 H LS	160	85	2100	250	26
17 i LS	170	85	2100	250	27
19 i LS	190	85	2100	250	30
Moli 2110 HP	106/69*	150/220*	2100	200	26/18*
Moli 2116 H	160/108*	85/130*	2100	230	31/21*

Note: Large cylinder volumes have already proven successful as they reduce the change-over frequency, wear and increase smooth running. The boom operates more smoothly owing to the smaller number of change-overs.

All data theoretical maximum values

\* rod side / piston side – Max. delivery rates and max. delivery pressures cannot be operated at the same time. Standard boom pipework: pressure up to max. 85 bar





# Efficient drive for economical operation

## Free-flow hydraulics – save fuel at full power in a closed system

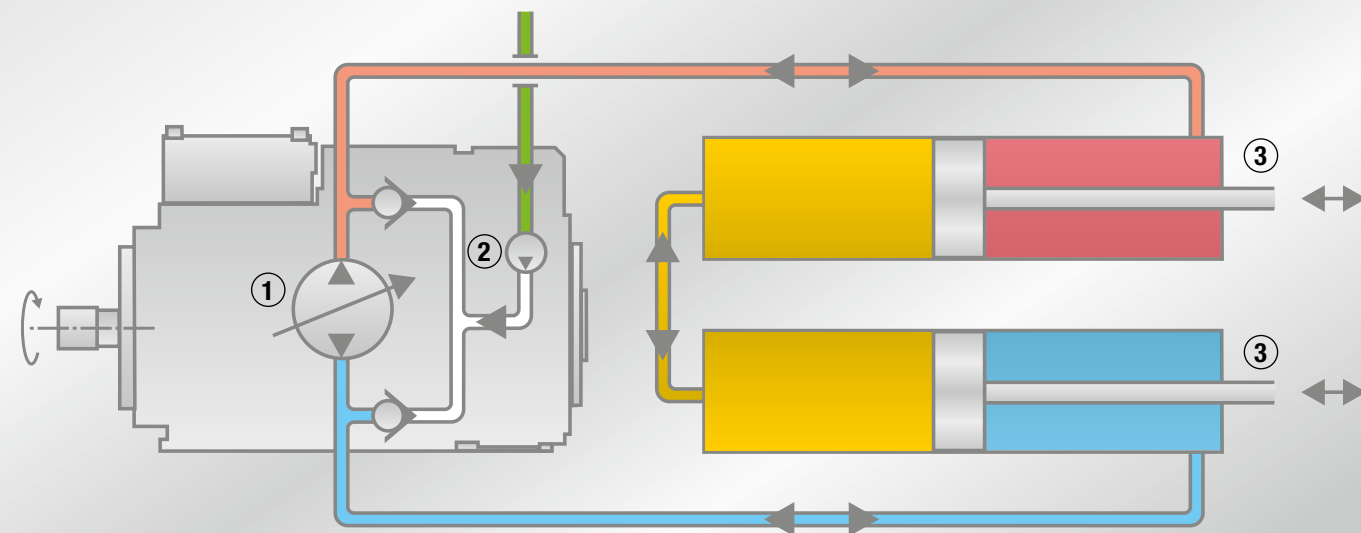
Today concrete pumps are predominantly operated by hydraulic systems. Putzmeister places its trust in the benefits of free-flow hydraulics because the most important performance factors are the concrete pressure, low-loss oil delivery and costs.

When large quantities of concrete are pumped, large quantities of oil also flow inside the hydraulic system. More power is transferred inside a closed free-flow hydraulic circuit because the oil is conveyed from the pump to the drive cylinders with minimal losses. The adapted hydraulic system ensures extremely powerful interaction be-

tween components because the oil ratio is perfect. Compared to an open circuit, this ingenious drive technology requires significantly less oil and does not generate as much heat. The system is also economical to operate because it achieves a high degree of energy efficiency and is easy to service.

- 1 Main pump
- 2 Feed pump
- 3 Drive cylinders

- High pressure
- Low pressure
- Swing oil
- Feed pump on suction side



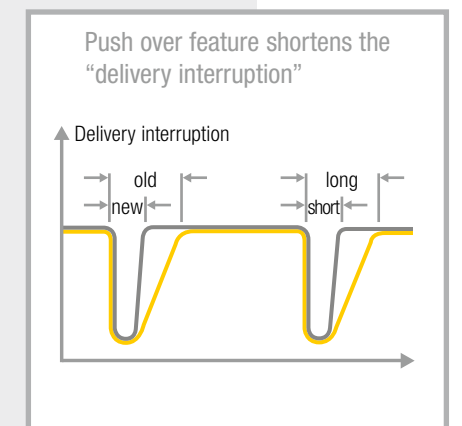
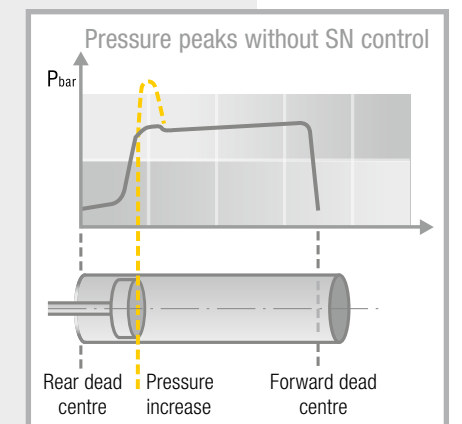
## Benefits of free-flow hydraulics at a glance

- **More power** and less energy lost
- **High efficiency**
- **While valves interrupt the oil flow in other systems, the intelligent control directs the oil into the drive cylinders without significant losses**
- **Expensive control blocks are not required** which avoids the oil heating up and makes servicing easier
- **Powerful, convenient operation** due to good ratio

## Work more conveniently and economically with the SN control and push over feature

Putzmeister concrete pumps are renowned for their smooth filling characteristics. Primarily responsible are the so-called SN (Surge Neutraliser) control and push over feature, which optimise switchover procedures and avoid wear-intensive peaks in pressure, extending the service life of the drive, delivery line and mounting.

The output flow rate is only interrupted momentarily because the start of the piston stroke and powerful transfer tube change-over process interact perfectly. An infinitely variable regulator meters the concrete quantity sensitively with maximum pressure even at the slowest delivery rates. One significant side effect is that the end hose is guided more smoothly and easily.





# HLC155 – Powerful hydraulic fluid radiators even for extreme demands

## For optimum cooling of the hydraulic system

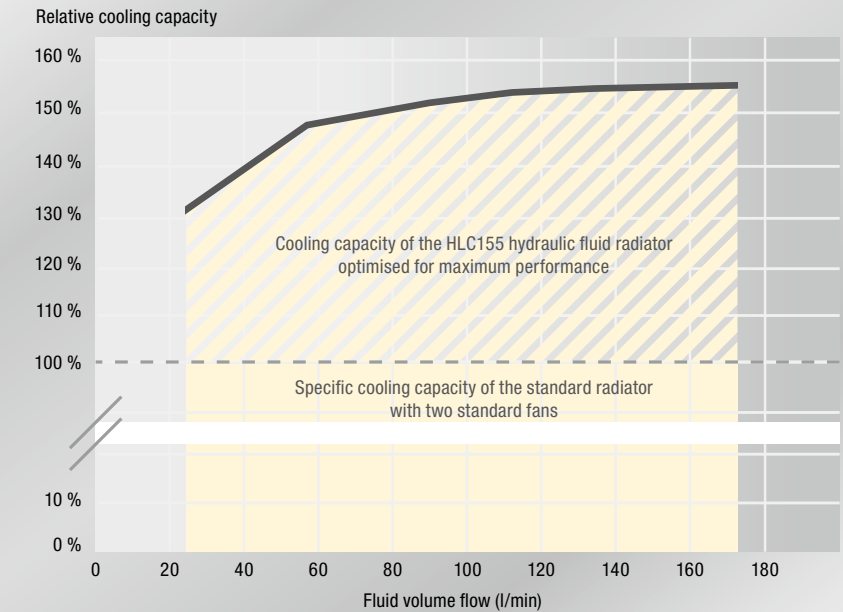
The HLC155 hydraulic fluid radiators from Putzmeister are designed and optimised for all climate zones. Whether the system is operating at minimum requirements in the central European winter or at maximum load during a Middle Eastern summer, the cooling of the hydraulic fluid is absolutely guaranteed.

Thanks to its brushless fan motors, the HLC155 is maintenance-free and extremely durable even if it is permanently operating at maximum cooling capacity.



## Full cooling capacity within the smallest space – the advantages of the very compact design

The HLC155 hydraulic fluid radiator achieves its high efficiency thanks to more powerful fans with an optimised fin geometry while keeping the space requirement to a minimum. This makes it possible to fit the entire cooling system in just one swinging support leg. The blocked space behind the radiator can be used, for example, for hose magazines. In addition, the accessibility of the components on and around the swinging support leg is improved.

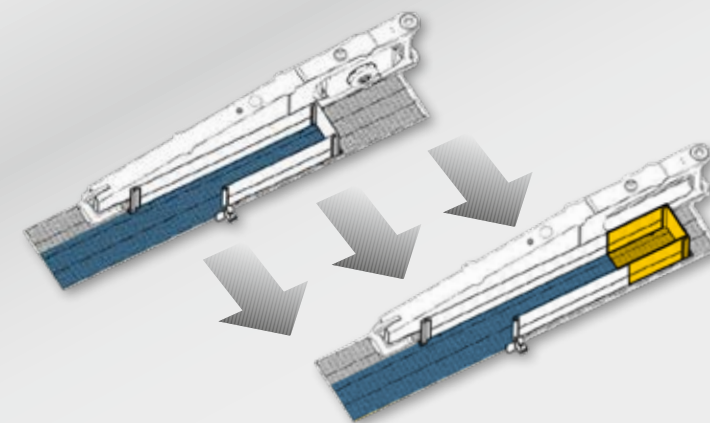


Measured cooling capacity of the HLC155 Putzmeister high-performance hydraulic fluid radiator in relation to the cooling capacity of a standard radiator



### Advantages:

- For all climate zones
- Maximum capacity
- Continuous operation at maximum cooling capacity
- Maintenance-free
- Extremely durable
- Very compact in just one swinging support leg
- Clearance, e.g. for hose magazines
- Few hoses



**+30% Clearance**  
**+55% Cooling capacity**  
**35% Reduction in weight**

### Données techniques :

<b>Tension du moteur</b>	24 V
<b>Consommation de courant</b>	20 A
<b>Vitesse de rotation</b>	4.100 / min
<b>Débit d'air</b>	1,1 m³/s (4.000 m³/h)
<b>Poids</b>	45 kg



# Its sustained power is derived from smooth operation

## Anything but average – the size of the diameter

Suitable pumps with a variety of concrete pressures and outputs are available to you for Putzmeister truck-mounted concrete pumps. These include the high-performance 16 H and 16 H LS. The low-stroke (LS) variant shows its strength in particular during demanding continuous operation. It has quite a few features to confront the challenges of wear-intensive concrete.

The prominent feature of the 16 H LS is the comparatively larger-sized cylinder diameter, which allows a lower number of strokes. In addition, we have equipped the 16 H LS exclusively with particularly long-lasting single pistons. Therefore, the earlier you decide in favour of a truck-mounted concrete pump with a 16 H LS dual piston pump, the sooner you will start to save money. We are happy to explain why that is so by showing you our calculations.

## Higher cylinder volume = strokes and less wear

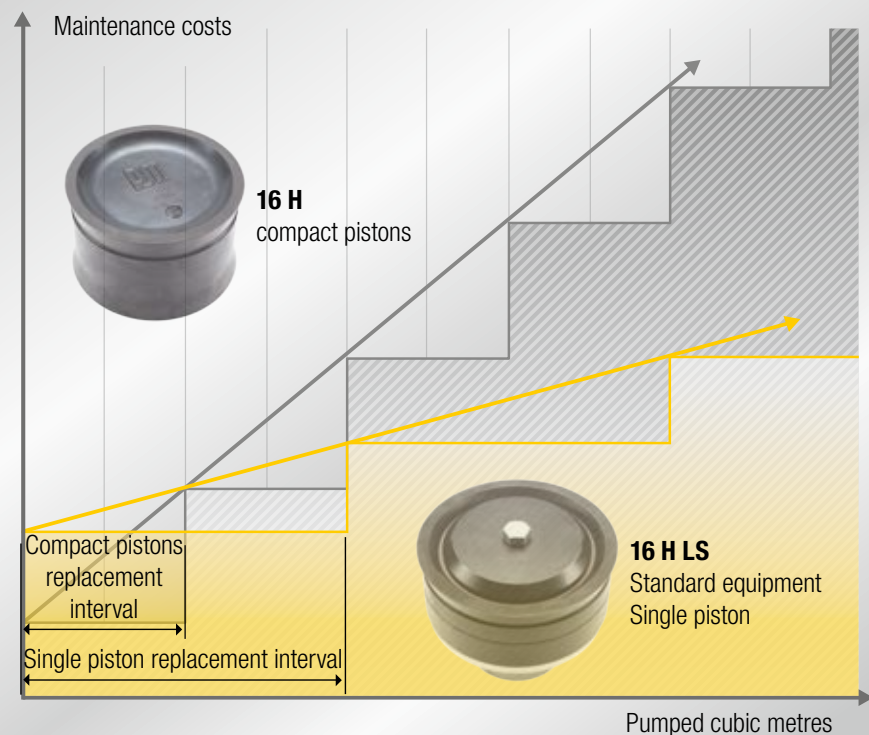
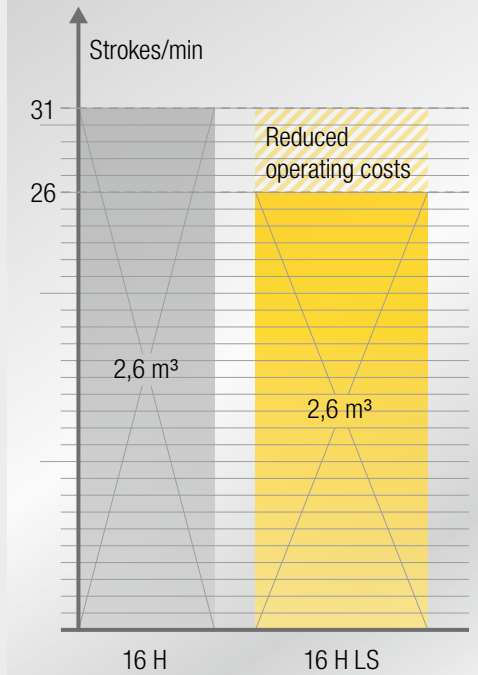
This calculation principle holds true because, given a large-sized cylinder diameter and the associated high cylinder volume, the pump requires fewer strokes to achieve a comparable output. And with fewer strokes, wear is automatically reduced, especially in the case of very abrasive concrete mixes. Service life is prolonged, which in turn means maximum economic operation for you.



## Compare the 16 H and the 16 H LS

The geometry of Putzmeister concrete pumps was designed for all current types of concrete. That is because delivery and drive cylinders operate in optimum harmony with one another, and in combination with all other components, they can master any challenge. Details such as long-life delivery pistons, chrome-plated delivery cylinders as standard and the design of the S transfer tube provide a substantial contribution towards this capability.

	16 H	16 H LS
<b>Delivery rate</b>	160 m³/h	160 m³/h
<b>Pressure</b>	85 bar	85 bar
<b>Stroke</b>	2100 mm	2100 mm
<b>Cylinder dia.</b>	230 mm	<b>250 mm</b>
<b>Strokes/min</b>	31	<b>26</b>



## Single pistons for long-lasting thrust

We equip all 16 H LS pumps with single pistons as standard. Using these high-quality pistons, you save more than 50 per-cent of the operating costs in comparison to compact pistons. Now that is what we call efficient concrete delivery:

- **More economical under all conditions of use**
- **Service life that is 2 to 3 times longer compared to compact pistons**
- **Especially suitable for high pressures and abrasive types of concrete**
- **Lower wear costs and a higher level of machine availability**

## The 16 H LS at a glance

- Larger-sized cylinder diameter for fewer strokes, which offers:
  - Reduced machine and boom dynamics
  - Smoother operation, reduces machine stress
  - Less wear
  - Lower fuel consumption
  - Long service life
  - Fast amortisation through reduced operating costs
  - Smoother pumping
  - Limited mast vibrations
- Particularly suitable for high-performance continuous operation and abrasive concrete
- Longer service life as a result of single pistons



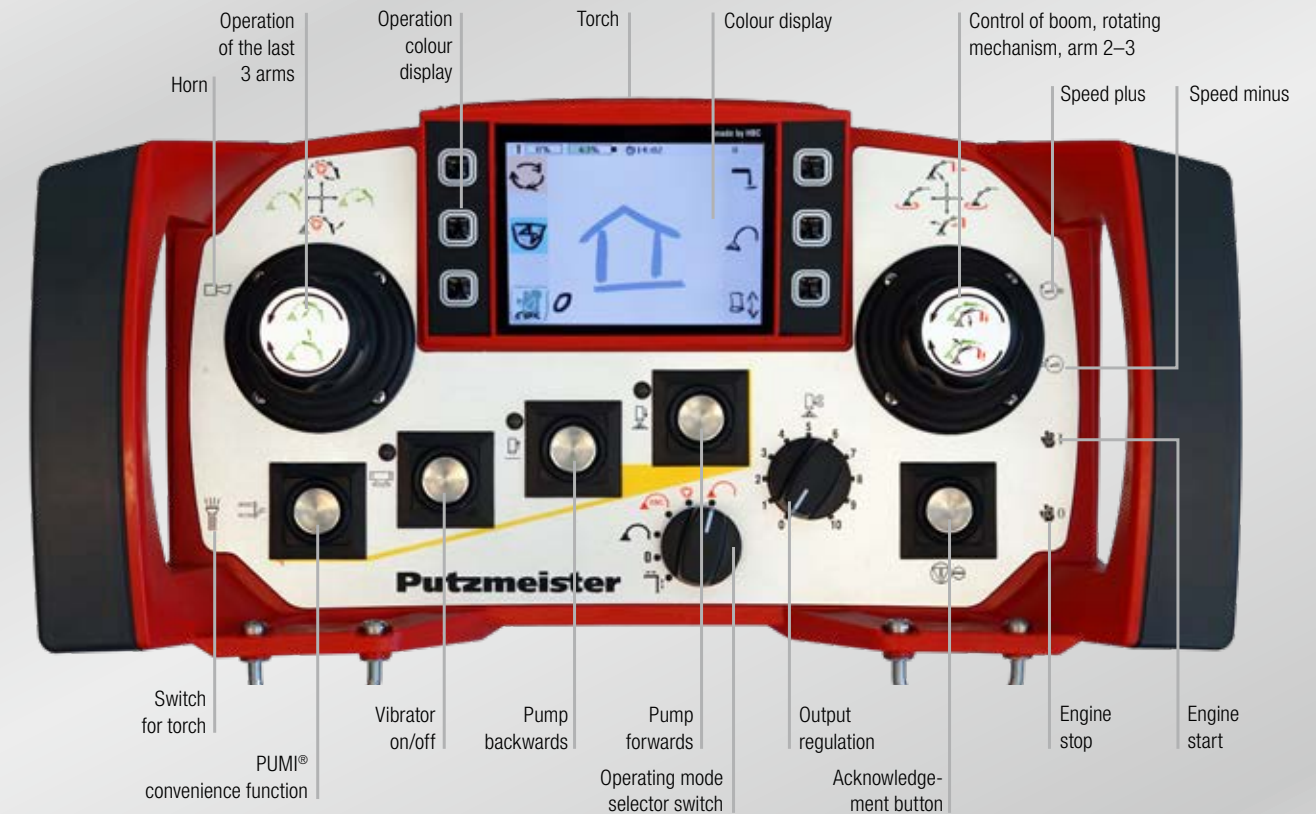


# Electronic pump controls for perfect concrete delivery

## EPS – Ergonic® Pump System – user-friendly, economical, extremely productive and a standard feature on all BSF piston pumps

Ergonic® inside essentially means the optimised, fully electronic control and regulation of concrete pumps, engines and distributor booms. How do you benefit? Your machines are ready to use more quickly, achieve a higher placement speed, operate economically and are resistant to wear. EPS (Ergonic® Pump System) regulates operation of the concrete pump and the truck engine and a computer-assisted control is installed in place of the hydraulic control.

The effect: Fewer hydraulic components, less wear, less energy consumption and the pumping process is quieter and more balanced. Vibrations on the boom and machine are reduced, which not only preserves the concrete pump and the vehicle, it also creates a better environment for residents and construction workers. EPS ensures the pump operates more quietly, even if the delivery rate is high.



Left side



Chip for machine | Connection for cable remote control

Right side



Emergency off

## An important component of EPS: EOC (Ergonic® Output Control)

EOC is fundamentally important for efficient operation and cost savings. EOC controls the engine speed with lower fuel consumption, wear and noise, so unfavourable operation ranges are automatically avoided. The machine operator adjusts the delivery rate of the pump directly using a rotary knob on the radio remote control and the EOC selects the perfect speed. It is not possible to set the minimum de-livery rate and the engine speed to full throttle at the same time with EOC. If the boom is not moved and the pump is off, the engine decreases to idling speed, which can save up to 10 per cent fuel.

## The advantages of EPS at a glance

- **Low wear**
- **Vibrations in the machine and boom are reduced**
- **Optimised, smooth pumping process**
- **Includes EOC (Ergonic® Output Control)** – regulates the engine to the perfect speed to minimise fuel consumption, wear and noise
- **Fault management** via EGD (Ergonic® Graphic Display)
- **Fewer components** and therefore lower service costs
- **Convenient radio remote control** incl. replacement cable remote control
- **Practical and reliable fault management**
- **High degree of machine availability** due to high-quality components and easy access to data via optional Ergonic® Tele Service (ETS) for rapid (remote) diagnosis

## Radio remote control with display for greater user-friendliness

The radio remote control allows you to conveniently control the boom as well as monitor and adjust different machine parameters. Rotary knobs and push buttons make it easier for the machine operator to control the boom and pump. Current messages and system information are shown directly on the clearly structured display, and the strength of the radio signal and charge status of the battery is indicated via bars.\* Relevant machine data, such as engine RPM, oil temperature, concrete pressure, delivery rate, pressure and volume limit can be quickly called up.

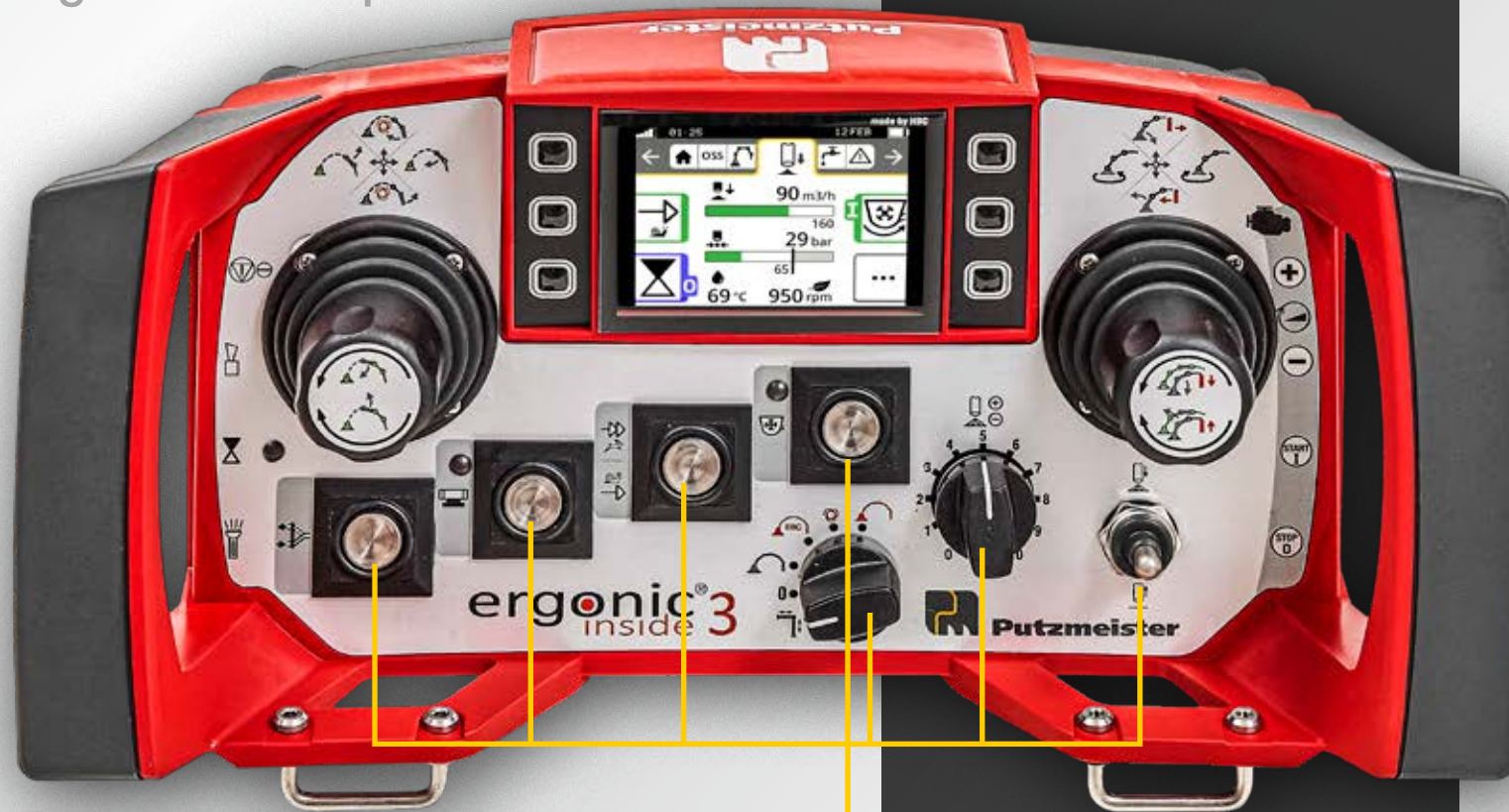
Features such as setting operation limits and switching the vibrator on or off can also be set from the radio remote, and when the EBC operation is activated, it is possible to control the boom with only one joystick. Ergonomic one-handed control then gives the machine operator a great deal of freedom of movement.

\* If the radio remote control cannot be used, the standard ca-ble remote control supplied with the machine represents an adequate replacement (not for machines with Ergonic® 2.0).

\*\* Not for machines with Ergonic® 2.0



# Ergonic® 3 – operation



**WORKING WITH A SMILE:**  
**INTUITIVE, EXACT AND EASY**

## Concrete action

# Basic concrete pump functions can also be controlled via hardware buttons, independent from operation via the display.

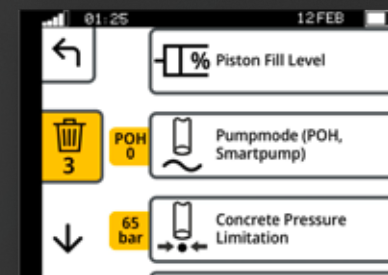
Quick-access buttons lead directly to results and are easy to operate even while wearing gloves.

## Keeping an overview – in every situation

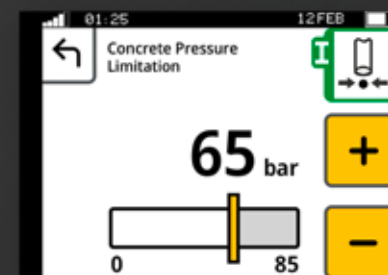
- # The “static” menu bar guides users through the menu – with no chance of “getting lost”.
- # Neatly and intuitively arranged functions.
- # Simple menu structure with a maximum of two submenu levels.
- # Main menu with all standard functions and additional details in submenus.



Main menu



Submenu level 1



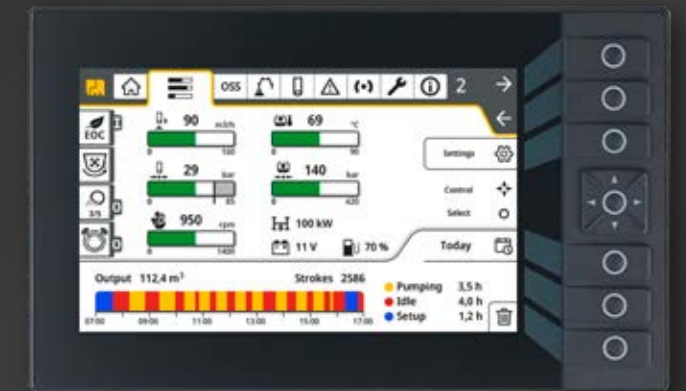
Submenu level 2

## Consistent concept on all “switching centres”

- # The menu structure is nearly identical on the remote control and the graphic display.
- # Hardware and software are perfectly matched at all operating positions.
- # The same intuitive operation on all Putzmeister products – without requiring a lot of training.



The additional screen on the control cabinet uses the same concept and offers a variety of information, settings and options.



Detailed setting options and a great deal of information makes it easier to understand the device.

## Dedication in every respect

Ergonic® inside means that the machines are quickly ready for use and they work with high power, fuel efficiency and low wear.

**And most importantly for machine operators: Work becomes easy!**



## # CONCRETE

Robust switches for basic functions ensure easy handling.

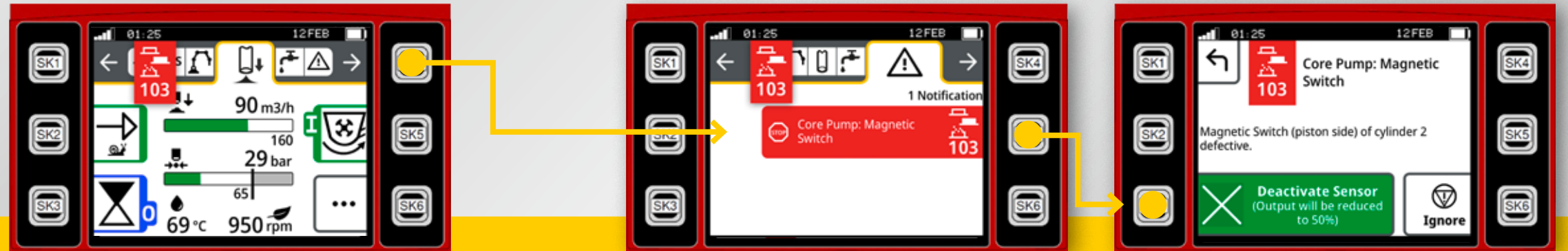
## # INTUITIVE

Easily comprehensible functions and work steps ensure focused working.

## # PRECISE

With the Ergonic® 3, you are using the powerful pump optimally and controlling the boom extremely precisely.





# NO DOWNTIME

Clearly guided fault management on the radio remote control and the graphic display

## # SIMPLE FAULT MANAGEMENT – FAST HELP

- # If worst comes to worst, machine operators receive a clear and comprehensible fault message that includes possible causes.
- # A great variety of suggested solutions are stored in the system. Machine operators can make many settings themselves directly on the machine to prevent a standstill.
- # The exact installation position of the affected component is specified with images and clear descriptions. This makes it easy to detect and replace defective fuses for example.
- # Emergency operation with manual control enables machine operators to safely complete a job they have already started.



## # REACTIVE

- # The comprehensive and reliable fault management perfectly prevents unwanted machine downtime.



# ERGONIC® 3

ALWAYS READY FOR THE FUTURE

## # A FUTURE-ORIENTED SOLUTION

Interfaces for future expansions are already set up and software updates are easy to perform. So your Ergonic® 3 is always up to date.

## # SERVICE-FRIENDLY CONCEPT

Services can be access quickly and implemented efficiently to achieve maximum availability. That is true for the entire Putzmeister fleet.



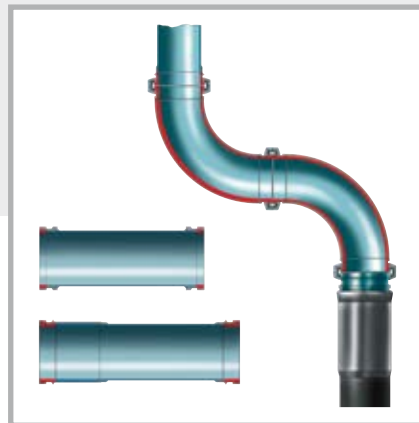
## Components that pay dividends every time they are used

The quality of installed components such as delivery lines and other wear parts is tailored to your requirements. You have the choice of selecting between different quality categories, depending on the load from different materials, special compression ratios or local conditions, for example. All have one thing in common: They are very economical in terms of service life and purchase costs.



## Even wear of delivery lines

Putzmeister delivery lines wear evenly from the feeder container to the boom tip. This means that pipes subjected to higher loads have a more wear-resistant design than those subjected to lower loads. How do you benefit? You can usually replace the delivery line completely without affecting the useful life of individual pipes, which not only saves time and money; it also increases the availability of your truck-mounted concrete pump.



## Benefits at a glance

- **Almost identical useful life of all individual components in the delivery line**
- **Components can be replaced together without loss**
- **Delivery lines available in 3 variants that cover individual requirements:**
  - **PM 40** – single-layer pipes
  - **PM 2520** – two-layer pipes that last up to 5 times longer than the PM 40
  - **PM 2520 Proline** – two-layer pipes that last up to 10 times longer than the PM 40

Clever and practical design – a comprehensive range of equipment choices are available to you as standard or options, all in the typical Putzmeister quality.

### Standard Features + Added Values

<b>Indicator LEDs</b>	This function will protect the operator and third parties from getting hurt by the agitator and pump		
<b>Vibrator, controllable via remote control or local</b>	The concrete goes through the hopper grill more smooth	Assures constant concrete flow	

### Middle East KIT (with transfer gear box) KITMID001001

<b>Additional oil-cooler (not with pipe-magazine)</b>	Additional cooling for hydraulic oil in very warm countries	No overheating of the hydraulic oil possible	Less downtimes of the machines thanks to optimal cooling
<b>Inner panel on flatbed</b>	Utilises the stowage space on the platform e.g. as pipe storage	Tidy storing of different materials and tools	Lateral rolling down is prevented by the inner rack
<b>Stowage compartment, RAL 7016 (depends on mounting)</b>	Protected against contamination during transport	Lockable compartment	e.g. for couplings, reducers, etc.

### Middle East road approval KIT KITSTR001003

<b>Outline marker retroreflecting</b>	Striking markings from retro-reflecting (reflecting) material make truck-mounted concrete pumps more recognisable	In certain countries, required for road traffic
<b>Side marker lamps LED</b>	Machine outlines more visible in the dark	In certain countries, required for road approval
<b>Underrun protection rear side, slewable, with lighting</b>	Prevents underride of the machine in case of rear collision	Auxiliary rear lighting protected from damage Uses the chassis manufacturer's lamps*

### Further Equipment

<b>By flow filter / Partial Flow Filter</b>	Extends the service life of the hydraulic oil	Oil change intervals can be extended by factor 4-5 based on customer feedback (from 500 hours to 2000-3000 hour interval)**
---	---	---

## Quality for every load requirement

The concrete pump is exposed to different levels of stress depending on the type of concrete mix used, which is why Putzmeister wear parts are manufactured with different quality classes:

- **DURO 22:** versatile and inexpensive but with sufficient service life for nearly all concrete pump applications
- **Carbide:** high hardness values, 2 to 4 times longer service life compared to the deposition welded version
- **Heavy-duty casting:** not as resistant to wear as the DURO 22, however the absence of cracks is a distinct advantage as it provides greater resistance to shear wear and is therefore suitable for thin concrete and pumping to elevated locations



The by-flow filter is an optional fine-filter element in the oil circuit, which has a big impact on the oil quality



Stowage compartment, RAL 7016 (depends on mounting)



The agitator safety switch off is a worldwide standard equipment in every Putzmeister machine!



# Ideal dimensions for indoor and outdoor activities – The 30 and 40 m class

# Long reach, compact folding The 50 and 60 m class

\*OSS (One Side Support)  
Note: the illustrations may differ from series models. Subject to technical modifications and errors.

## Contortionists with minimal space requirements – flexible, manoeuvrable and an essential addition to any project

Truck-mounted Concrete Pumps from the 30m and 40m class have the perfect ratio of small support dimensions and a long boom reach, which make them an all-rounder among truck mounted concrete pumps. They can frequently be found on medium and large construction and civil engineering sites, often in a restricted space. Medium class machines are both powerful and flexible.

Ingenious folding systems, predominantly the Z-roll version can fully extend to maximum reach and allow safe, smooth working progress with high-performance pumps in buildings. Furthermore, the smaller 30 meter machines have an optimal maneuverability in inner city traffic.

## Medium class distributor booms with premium application possibilities

In the 50-60 m class, reliability and robustness are the key to success. The extremely flexible TRDV support of the 60 m class sets standards in terms of operator safety and required job site support space, so these concrete pumps are also suitable for construction sites with little space, such as in inner cities.

The Operator has all the important information on the display of the Ergonic® remote control in his hand at all times in order to operate the machine safely. Economically, this pump class convinces with high resale values, low operating costs, low downtimes and reliable quality from Putzmeister. Show yourself and your company at your best!

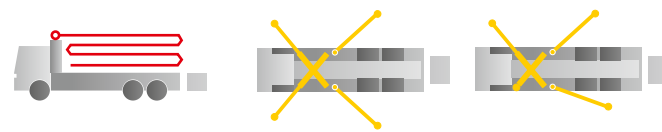
### M36

#### 4-arm Z fold system

Vertical reach 35.6m  
Horizontal reach 31.4m  
Depth of reach 23.9m  
Unfolding height 8.5m

#### Support width

	Standard	narrow*
Front	5.5 m	4.0 m
Rear	7.0 m	5.8 m



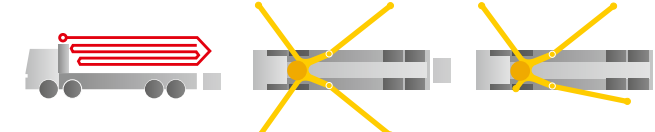
### M51

#### 5-arm roll Z-folding

Vertical reach 50.1 m  
Horizontal reach 44.9 m  
Depth of reach 35.1 m  
Unfolding height 10.2 m

#### Support width

	Standard	narrow*
Front	9.3 m	5.9 m
Rear	10.6 m	7.6 m



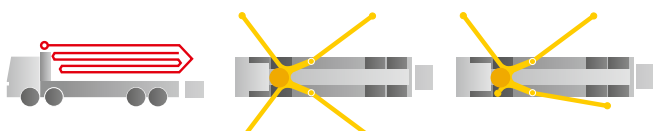
### M42

#### 5-arm roll Z-folding

Vertical reach 41.6 m  
Horizontal reach 37.3 m  
Depth of reach 31.0 m  
Unfolding height 8.6 m

#### Support width

	Standard	narrow*
Front	7.5 m	5.0 m
Rear	8.3 m	6.4 m



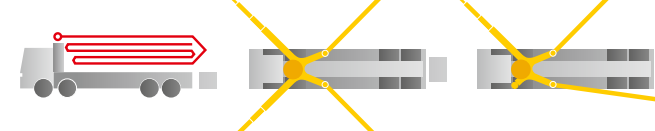
### M56

#### 5-arm roll Z-folding

Vertical reach 55.1 m  
Horizontal reach 49.9 m  
Depth of reach 40.3 m  
Unfolding height 15.6 m

#### Support width

	Standard	narrow*
Front	9.3 m	5.9 m
Rear	12.1 m	8.3 m



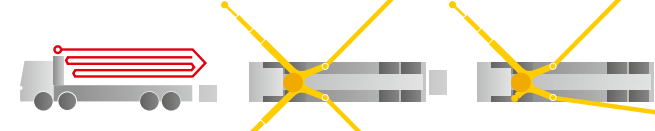
### M60

#### 6-arm RZR folding

Vertical reach 59.2 m  
Horizontal reach 54.2 m  
Depth of reach 44.1 m  
Unfolding height 13.0 m

#### Support width

	Standard	narrow*
Front	12.1 m	5.9 m
Rear	13.2 m	7.6 m



\* OSS (One Side Support)  
Note: the illustrations may differ from series models. Subject to technical modifications and errors.



When things get tight

Build on Putzmeister –  
in service, parts, training

**Intelligent design,  
professional implementation –  
for economical operation in  
special projects**

City pumps never hang around for very long. These truck-mounted concrete pumps offer an economical solution specially designed for urban areas, narrow, complex construction sites and renovation work. Equipped with a powerful pump unit, they can perform several jobs per day, carry all the equipment needed to perform concreting work and handle the most challenging concrete mixes.

These specialist machines are also extremely easy to clean, maintain and operate and are a real pleasure to work with.



**Everything that sets service apart**

Swift assistance, meaningful advice and a reliable supply of genuine Putzmeister accessories and parts - in over 120 countries worldwide. This is what we at Putzmeister understand as first-class service.

**Ideally placed to support you**

We train our service technicians continuously, provide a close-knit information network and the latest equipment and consistently strive to meet our customers' needs.

Thanks to state-of-the-art technology, our employees have all the relevant technical information about your machine at their fingertips, should the need arise. Allowing us to provide you with the best possible support for emergencies, repairs or preventive maintenance.



**Moli 2110 HP**

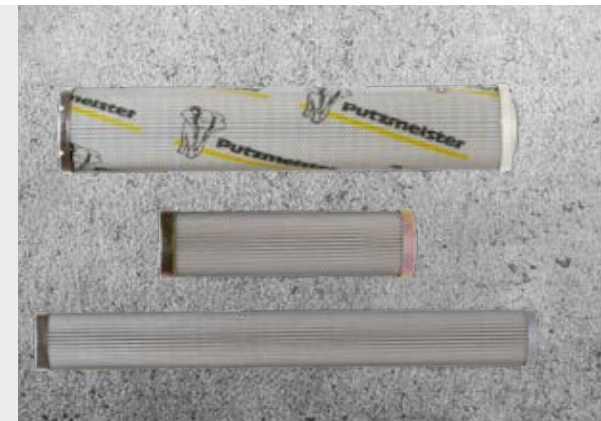
**Mobile pipeline concrete pump  
for high-pressure delivery**

Pump	BSF 2110 HP
Output	106 / 69* m <sup>3</sup> /h
Pressure	150 / 220* bar
Delivery cylinder Ø	200 mm
Delivery cylinder stroke	2100 mm
Width	= Vehicle width



**Genuine parts for maximum availability**

It goes without saying that we use only genuine Putzmeister parts in our workshops. This is the only way to guarantee consistent quality, checked for interoperability. And you can be absolutely sure that your machine meets the tough requirements with maximum performance and availability.



**Moli 2116 H**

**Mobile pipeline concrete pump  
for standard applications**

Pump	BSF 2116 H
Output	160 / 108* m <sup>3</sup> /h
Pressure	85 / 108* bar
Delivery cylinder Ø	230 mm
Delivery cylinder stroke	2100 mm
Width	= Vehicle width



**Excellent in quality and  
customer proximity**

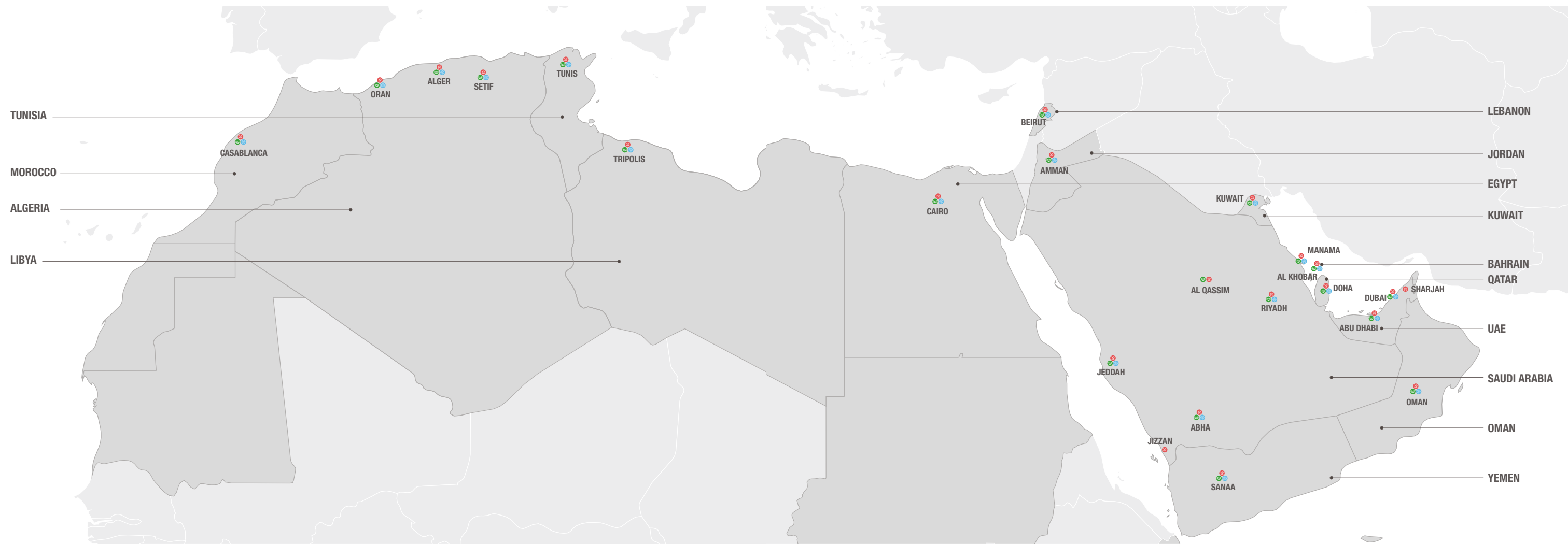
In case of need, you have two options: Either the service team visits you or you take your machine to one of our service workshops. The latest tools, software analysis solutions and genuine parts ensure that your machine is operable again immediately.

All Putzmeister workshops and the workshops of our international Putzmeister partners meet our high-quality standard. Especially when it comes to manufacturer's inspections and acceptance procedures in accordance with specifications.

\* Rod/full side – maximum delivery rate and maximum concrete pressure cannot be achieved simultaneously.



# Sales and Service Map Middle East and North Africa



**Induction from the handover –  
everything correct from the outset**

**Customer training –  
benefit from expert knowledge**

**100 hours of customer service –  
avoid potential sources of error**

## Our service for cost-effective work

The Putzmeister service support points  
offer you these services –  
all provided by our experienced  
service staff

**500 hours of customer service –  
protect your investment,  
retain your value**

**Mandatory machine inspection –  
calculable costs instead  
of incalculable features**

## Our range of training courses and seminars:

### For concrete pump operators

- Training and development seminars on concrete pumps
- Training and development seminars on PUMI with piston and rotor pumps
- Regional/company seminars (in your region or on your premises)

### For concrete pump mechanics

- Training and development seminars on concrete pump

### For concrete pump machinists and mechanics

- Practical days in Aichtal
- Training: Handover and induction, on-the-job training

### For workshop managers and foremen

- Overview of current developments in Putzmeister concrete pumps
- Qualification at the customer workshops for requisite maintenance work

Further information can be found at:  
[www.pm-akademie.de](http://www.pm-akademie.de)





# The new generations



Subject to technical modifications and errors © by Putzmeister Concrete Pumps GmbH 2021. All rights reserved. Printed in Germany (2108) CT-5007-EN

## **PUTZMEISTER Middle East (DMCC Branch)**

Indigo Icon Tower, Cluster F Office, no. 1008

Jumeirah Lakes Towers, Dubai, U.A.E.

Tel: + 971 (0) 44 54 27 83 · Fax: + 971 (0) 44 54 27 82

[www.putzmeister.com](http://www.putzmeister.com)

 **Putzmeister**