



Putzmeister



BSA Series

Technical specifications

Built for the most demanding jobsites

High output, high pressure, high performance

Putzmeister has combined both high output and high pressure into one pump. Our extended line of BSA Series trailer pumps, from the BSA 2109 Series to the BSA 14000 Series, facilitates pumping in a wide variety of applications, such as high-rise and long-distance concrete pumping, tunnel construction, sludge pumping, and other specialty jobs.

Convenient controls

The control panel — equipped with Ergonic® 3 starting mid 2025 — is fully enclosed for weatherproof wear and includes an emergency stop button. The remote control, with 33 ft. (10 m) of cable, features pump on/off, pump forward/reverse and stroke change. An auxiliary hydraulic connection on the pump is standard for the 2100 and 14000 Series.



Optional high pressure water pump for easier and more effective clean-out

Making quick work of tough mixes

Our powerful pumps handle the harshest mixes with pumpable consistencies down to a 0" slump, with a maximum 2.5" (63 mm) aggregate size.

Heavy-duty tandem axles

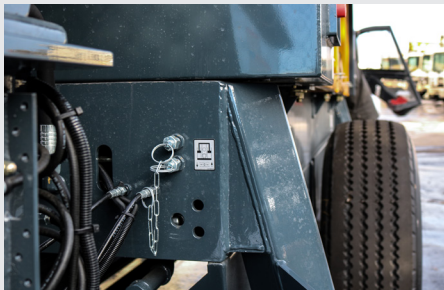
Designed for highway travel and job site use, the steel frame trailer is fully equipped with four manually-operated outriggers and a front jack stand with a support wheel on a tow bar.

Rugged delivery cylinders

Special hard-chromed material cylinders assure long service life.



Rod/piston change-over system is designed to be fast and easy to facilitate output or pressure



Auxiliary hydraulic connection is included on 2100 and 14000 pumps to operate stand-alone diversion or shutoff valves



Easily accessible engine for quick maintenance

Free flow hydraulics in a closed loop system

Simple and reliable, Putzmeister's closed loop, free flow hydraulics (FFH) design provides smoother, more controllable and economical approach to pumping. The pump has a fully adjustable volume control to allow very slow pumping while retaining full concrete pressure. Convenient to use and easy to service, this exclusive system is known for its performance and reliability worldwide.

- Changes in material pressure in the delivery line are reduced to ensure smooth pumping and a consistent concrete flow.
- The intelligent design minimizes wear-inducing pressure peaks, increases service life, and makes our pumps extremely powerful.
- Rapid change-over of the stroke means higher outputs and a smoother flow of concrete.
- There is greater pump output due to the efficient use of all available energy.

Exceeding the emissions directive

BSA D5 models feature efficient exhaust gas treatment systems that incorporate a Diesel Partical Filter (DPF) to reduce soluble particles and diesel soot, and a Selective Catalytic Reduction (SCR) that reduces nitrogen oxides. Our improved machines effectively meet all emission requirements, while offering even greater efficiency and reduced operating costs.

RS 905 Hopper

Putzmeister's RS 905 hopper is engineered for performance and durability, and is ideal for high pressure applications and harsh mixes.

- 21.2 cu ft (600 L) capacity
- Wide opening for simultaneous unloading of mixer trucks
- Rubber collar
- Agitator with safety switch-off
- Vibrator
- Grate with splash guard
- Central lubrication

High-pressure S-valve

Ideal for high pressure applications, the S1812 S-Valve features a "thick-walled" construction that maximizes the valve's life to help reduce wear part costs. It also easily adjusts to compensate for wear. In addition, the S-Valve features:

- Hard-faced, wear-resistant alloys on the spectacle wear plate and automatic seal ring
- Twin, single-acting hydraulic shift cylinders, mounted outside the hopper, for better protection and easy adjustments
- Carbide wear parts

S1812 S-Valve only available on certain models



European model shown

Benefits at a glance

- High output and high pressure in one pump
- Fully enclosed control panel with emergency stop button
- High pressure S-Valve
- RS 905 Hopper
- Hard-chromed delivery cylinders
- Heavy-duty tandem axles
- Free Flow Hydraulics
- Gate and diversion valves
- Simple cleanup
- Long-term dependability
- Compliance with Directive 97/68/EC, Tier 5 Final
- Smoother operating performance that protects the machine
- Reduction in noise levels
- Reduction in average fuel consumption up to 10%, resulting in lower operating costs
- Up to 15% more power than similar Tier 3 engines
- CE mark

Gate and diversion valves

Gate valves and hydraulic diversion valves are completely leak-proof to meet modern pipeline requirements, while hydraulic diversion valves are also ideal for use with two or more delivery lines.

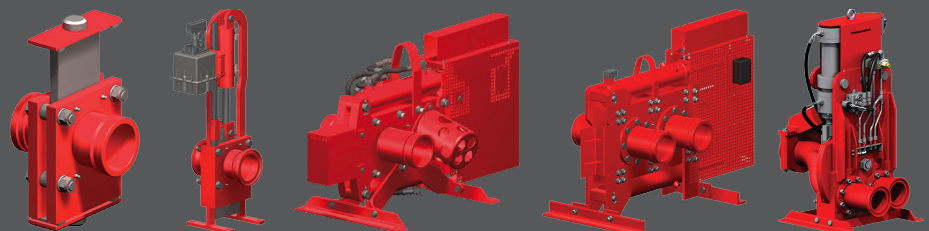
GVM 2/2

GVHM 2/2

GVH 2/2

DVH 5/2

SDVH 3/2



Simple operation with a smart design

Easy access for easy operation

The new BSA series features easily accessible components for quicker maintenance, service, and cleaning.



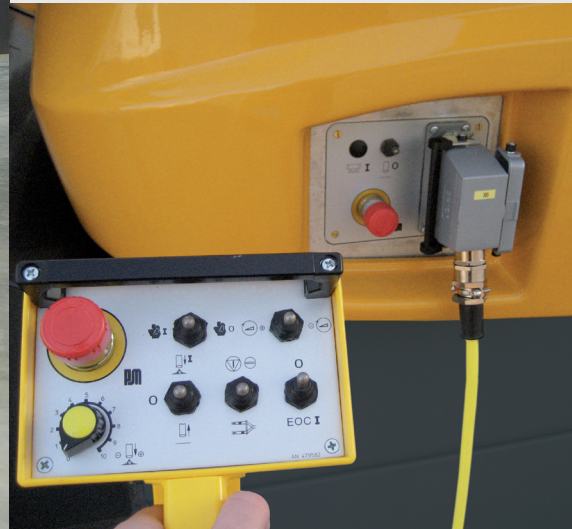
Optimized hopper shape simplifies the cleaning process and reduces interruptions while supplying concrete.

Swing-up doors ensure easy access, and protect the machine operator from rain and sun while working inside the machine.

European model shown

Simple controls on the radio remote control and the EGD

The operating controls of both the cable remote and the radio remote are neatly arranged, allowing for quick and easy operation. The Ergonic® Graphic Display (EGD) shows all the relevant real-time machine data, and has a reliable fault management system that allows the machine to be fully operational even in the event of a fault.



Centralized location

All hydraulic measuring points have been relocated to one central location for quick reference and more efficient operation.



Ergonic[®] 3 – coming 2025

Ready for the future

- **A future-oriented solution** with interfaces for future expansions and easy software updates.
- **Service-friendly concept** with services that can be accessed and implemented efficiently.
- **Clearly guided fault management** on the radio remote control and display.

The new Ergonic[®] 3 – clear, fast, and safe

- **Continuous operating concept** for all Putzmeister products with the same functions and displays – whether on the radio remote control or the Ergonic Graphic Display (EGD).
- **Intuitive work and quick reactions** thanks to a clear menu structure and intuitively arranged functions.
- **Full overview** of machine status on the radio remote control and EGD (incl. valves, sensors, and LEDs on fuses).
- **Detailed fault management:** Faults are easy to detect and rectify – even without a Putzmeister technician.
- **Multi-level emergency operation** keeps the machine running even in the toughest conditions.

**AS EASY TO OPERATE
AND MORE INTUITIVE
THAN EVER BEFORE**

ERGONIC[®] 3

Pumping made smart

As a switching center, the microprocessor-supported control systems regulate the functions of concrete pumps and placing booms.

Starting mid 2025, BSA models will be equipped with Ergonic 3. Consult your sales representative for final configuration.

Always by your side – Ergonic[®] 3 inside

EPS Ergonic Pump System

Takes control of the concrete pump for optimized pumping.

EOC Ergonic Output Control

Regulates the optimum motor speed for smooth operation with fuel efficiency and low wear.

BSA 2100 Series specifications

BSA 2100 Series

- High performance — long stroke
- Designed for jobs extending up to 800 ft (244 m)



European model shown

		BSA 2109 H-D5 •		BSA 2108 HP-E •		BSA 2110 HP-D5	
Performance		Imperial	Metric	Imperial	Metric	Imperial	Metric
Output •	Rod side	124 yd ³ /hr	95 m ³ /hr	124 yd ³ /hr	95 m ³ /hr	133 yd ³ /hr	102 m ³ /hr
	Piston side	75 yd ³ /hr	57 m ³ /hr	86 yd ³ /hr*	66 m ³ /hr*	92 yd ³ /hr*	70 m ³ /hr*
Pressure •	Rod side	1,320 psi	91 bar	2,176 psi	150 bar	2,176 psi	150 bar
	Piston side	2,205 psi	152 bar	3,190 psi*	220 bar*	3,190 psi*	220 bar*
Max. Size Aggregate		2.5"	63 mm	2.5"	63 mm	2.5"	63 mm
Technical Information		Imperial	Metric	Imperial	Metric	Imperial	Metric
Material Cylinders		8" x 83"	200 x 2,100 mm	8" x 83"	200 x 2,100 mm	8" x 83"	200 x 2,100 mm
Max. strokes per minute	Rod side		24		24		26
	Piston side		15		17		18
Variable volume			0-Full		0-Full		0-Full
S-Valve			S-2015D		S-1812D		S-2015D
Chromed cylinders			Standard		Standard		Standard
Hydraulic system			FFH-EL		FFH-EPS		FFH-EL
Hydraulic system pressure		5,075 psi	350 bar	5,075 psi	350 bar	5,075 psi	350 bar
Hydraulic cylinders		5.1" x 3.2"	130 x 80 mm	6.3" x 3.5"	160 x 90 mm	6.3" x 3.5"	160 x 90 mm
Hopper	Model		RS 900H		RS 905HF		RS 905HF
	Capacity	21.2 ft ³	600 L	21.2 ft ³	600 L	21.2 ft ³	600 L
Height		51"	1,295 mm	50"	1,270 mm	50"	1,270 mm
Outlet diameter			ZX150		ZX125		ZX150
Power		Imperial	Metric	Imperial	Metric	Imperial	Metric
Diesel Engine / Motor			Deutz		460V 60hz		Deutz
Engine Horsepower		302 hp	225 kW	335 hp	250 kW	456 hp	340 kW
Trailer		Imperial	Metric	Imperial	Metric	Imperial	Metric
Trailer Type			Tandem axles		Tandem axles		Tandem axles
Dimensions		Imperial	Metric	Imperial	Metric	Imperial	Metric
Length		287"	7,300 mm	284"	7,221 mm	304"	7,725 mm
Width		81"	2,050 mm	85"	2,169 mm	101"	2,560 mm
Height		98"	2,500 mm	90"	2,277 mm	94"	2,390 mm
Approximate weight		15,000 lbs	6,800 kg	21,800 lbs	9,890 kg	20,500 lbs	9,300 kg

BSA 14000 Series specifications

BSA 14000 Series

- **Most powerful concrete pump**
- **Multiple cylinder sizes available to fit any job requirements**



European model shown

BSA 14000 HP-D5 7" •		BSA 14000 HP-D4 8" •		BSA 14000 HP-E 8"		BSA 14000 SHP-D5 7"	
Imperial	Metric	Imperial	Metric	Imperial	Metric	Imperial	Metric
110 yd ³ /hr	84 m ³ /hr	133 yd ³ /hr	102 m ³ /hr	116 yd ³ /hr	89 m ³ /hr	94 yd ³ /hr	72 m ³ /hr
74 yd ³ /hr*	57 m ³ /hr*	92 yd ³ /hr*	70 m ³ /hr*	78 yd ³ /hr*	60 m ³ /hr*	48 yd ³ /hr*	37 m ³ /hr*
2,290 psi	158 bar	2,176 psi	150 bar	2,176 psi	150 bar	3,190 psi	220 bar
3,350 psi*	231 bar*	3,190 psi*	220 bar*	3,190 psi*	220 bar*	3,626 psi*	250 bar*
2.5"	63 mm	2.5"	63 mm	2.5"	63 mm	2.5"	63 mm
Imperial	Metric	Imperial	Metric	Imperial	Metric	Imperial	Metric
7" x 83"	180 x 2,100 mm	8" x 83"	200 x 2,100 mm	8" x 83"	200 x 2,100 mm	7" x 83"	180 x 2,100 mm
	26		26		22		22
	17		18		15		11
	0-Full		0-Full		0-Full		0-Full
	S-1812D		S-1812D		S-1812D		S-1812D
	Standard		Standard		Standard		Standard
	FFH-EL		FFH-EL		FFH-EL		FFH-EL
5,075 psi	350 bar	5,075 psi	350 bar	5,075 psi	350 bar		Consult factory
6.3" x 3.5"	160 x 90 mm	6.3" x 3.5"	160 x 90 mm	6.3" x 3.5"	160 x 90 mm	7.9" x 5.5"	200 x 140 mm
	RS 905HF		RS 905HF		RS 905HF		RS 905 SHP F
21.2 ft ³	600 L	21.2 ft ³	600 L	21.2 ft ³	600 L	21.2 ft ³	600 L
51"	1,295 mm	50"	1,270 mm	51"	1,295 mm	51"	1,295 mm
	ZX125		ZX125		ZX125		ZX125
Imperial	Metric	Imperial	Metric	Imperial	Metric	Imperial	Metric
	Caterpillar		Caterpillar		460V 60hz		Caterpillar
630 hp	470 kW	630 hp	470 kW	2 x 248 hp	185 kW	630 hp	470 kW
Imperial	Metric	Imperial	Metric	Imperial	Metric	Imperial	Metric
	Tandem axles		Tandem axles		Jobsite axles		Jobsite axles
Imperial	Metric	Imperial	Metric	Imperial	Metric	Imperial	Metric
308"	7,830 mm	308"	7,830 mm	308"	7,830 mm	297"	7,545 mm
101"	2,560 mm	101"	2,560 mm	101"	2,560 mm	92"	2,331 mm
142"	3,600 mm	142"	3,600 mm	142"	3,600 mm	130"	3,302 mm
23,810 lbs	10,800 kg	25,340 lbs	11,600 kg	23,840 lbs	10,810 kg	24,250 lbs	11,000 kg

• SBU Standard * Special equipment configurations required to operate on piston side.

Maximum theoretical values listed. Maximum output and pressure cannot be achieved simultaneously. Minimum slump and maximum aggregate size are dependent upon concrete mix design, site conditions, and pipeline diameter. Specifications subject to change without prior notice.

Here for you every step of the way

Our Putzmeister Promise

We build machines that increase your production and give you a competitive edge – and these machines are continuously developed. Innovative technologies and durable quality need to adapt to your ever-changing daily challenges. Our products stand for optimum output with low fuel consumption, wear, and costs.

Our customers will always have a thinking, intelligent partner in all their undertakings; a partner that will deliver to their exact requirements regardless of the complexity of the task or the remoteness of the scale. With knowledge and understanding backed by experience, we approach every task with renewed enthusiasm – be it a small scale construction or a mass assignment, tight deadlines, or unique concreting and manufacturing needs.

Your Putzmeister Team



Authorized Distributor © Putzmeister America, Inc. 2024. CT 4813-2 EN.
Photos and drawings are for illustrative purposes only and may not depict the final model.



Putzmeister

Putzmeister America, Inc.
1733 90th Street
Sturtevant, WI 53177 USA
Putzmeister.com

Phone (262) 886-3200
Toll-free (800) 884-7210
Fax (262) 884-6338
pmr@putzmeister.com